



Lake Washington Improvement Association

Summer 2019

*Walleye Survey Update
(See Page 7)*



SUMMER NEWSLETTER, 2019

Lake Washington Improvement Assn.
PO Box 68 Dassel, MN 55325
www.lakewashingtonassn.com
Email: info@lakewashingtonassn.com

Contact Us



General Issues:

info@lakewashingtonassn.com

Membership Changes:

membership@lakewashingtonassn.com

Lost and Found:

lostfound@lakewashingtonassn.com

The Lake Washington Newsletter is published three times a year (Spring, Summer and Fall) by the Lake Washington Improvement Association. It is distributed free to lake property owners and friends around Lake Washington.



End of the Dock 3



Grant Activity 4



Invasive Species 5



Watershed Report 6



Walleye Update 7



Water Quality 10



I-LIDS 11



Committee Reports 14



Paid Memberships 17

End Of The Dock

By Steve Grotbo, President

We normally announce the official ice out date in the spring newsletter, but Mother Nature did not cooperate, so now we finally get to announce that it was April 21st (Easter Sunday). Better than last year's May date but still much later than 2017's March date. I am hopeful that global warming will give us more March dates in the future.

The annual pork chop meeting was a great success and included the election of Laurie Johnson and Cindy Hewitt to the board. Be sure to congratulate them. Cathy Klehr is moving away from the lake and we thank her for her many years of service to the lake. Cathy started out heading up the membership list before joining the board in 2011. With her departure, we are looking for another board member for a 1 ½ year term. Please let us know if you are interested in joining the team. The board officers are the same as last year.

Things are definitely changing around the lake these past years. An interesting statistic I saw was that in 2005 the average lake owner in Minnesota was 55. Ten years later in 2015, the average owner was 65, indicating no property turnover for that period. Within the past few years, we now all have a new neighbor or two, which I think is great and we welcome everyone to enjoy the lake. I am also seeing a number of impressive "toys" on the lake with many of them costing well over \$50k. Perhaps one of these days I will be offered a ride?

At Ellsworth landing, the association is sponsoring a garbage can with weekly pick up service. We received many concerns from members on trash just being left in the area. The hope is that people do not abuse this and we can have garbage service in place next season and beyond. To help in this effort, the I-LIDS camera that is already in place for boat launchings will also film garbage abusers.

The lake's Facebook page (<https://www.facebook.com/LakeWashington/>) is getting a lot of activity these days. Last year we ended at 192 likes, now we are at 312 people. I know the younger generation is saying that Facebook is only for older people, which probably is the category most of us fall under. This also tells me that more members must have Internet access since only 80% said they had access during the 2013 survey.

A big thank you to Renae McKimm for organizing a Lake Washington sweatshirt sale. The first round sold 108 items bringing in over \$1200 for the invasive species fund. A second round of sales was done to satisfy the high demand for youth sizes. I am hoping for a third round offering sweatshirts for the dogs.



2018 Approved Grant Program

By Sharon Daniels, Grant Coordinator

Happy Summer!

Although we seem to have been a bit short on summer warmth during May and into the first part of June, we are hopeful and looking forward to a beautiful summer ahead!

Funds granted for 2019 for AIS and sediment control projects are in place as stated in the Spring Newsletter. Volunteers have begun working on some of the designated projects around the lake, such as water quality testing, I-LIDS working correctly, zebra mussel hotels in place, and watershed monitoring for run off. Keep in mind if you do any volunteer work, whether it be shoreline captain duties, or in a boat, going to meetings, etc., please keep track of your hours, food or gas receipts, mileage driven to do a project, etc. You can email me at sdaniels@grdaniels.com with all your "in-kind" hours, or any info you may have. I keep track of all the info for the year in a report, and then I send this report to the county at the end of the year. This report reflects how and why our lake is kept in as good of condition as it has been, and I use this report when working on grants for each new year.

THANKS to all that help in any way to keep our lake safe, fun and usable!



**Midwest
Garden Company**

Annuals, Perennials, Trees,
Shrubs, Wild Bird Supplies,
Garden Accents, Gifts,
Seasonal Items

21392 CSAH 18
Dassel, MN 55325

www.midwestgardenco.com 320-275-9514 Hours: Tues.-Sat. 9-6, Sun. 1-5

The advertisement features a rustic log cabin with a green door and windows, set against a light green background with a decorative vine on the left. The text is arranged in a clear, readable layout, providing contact information and a list of products.

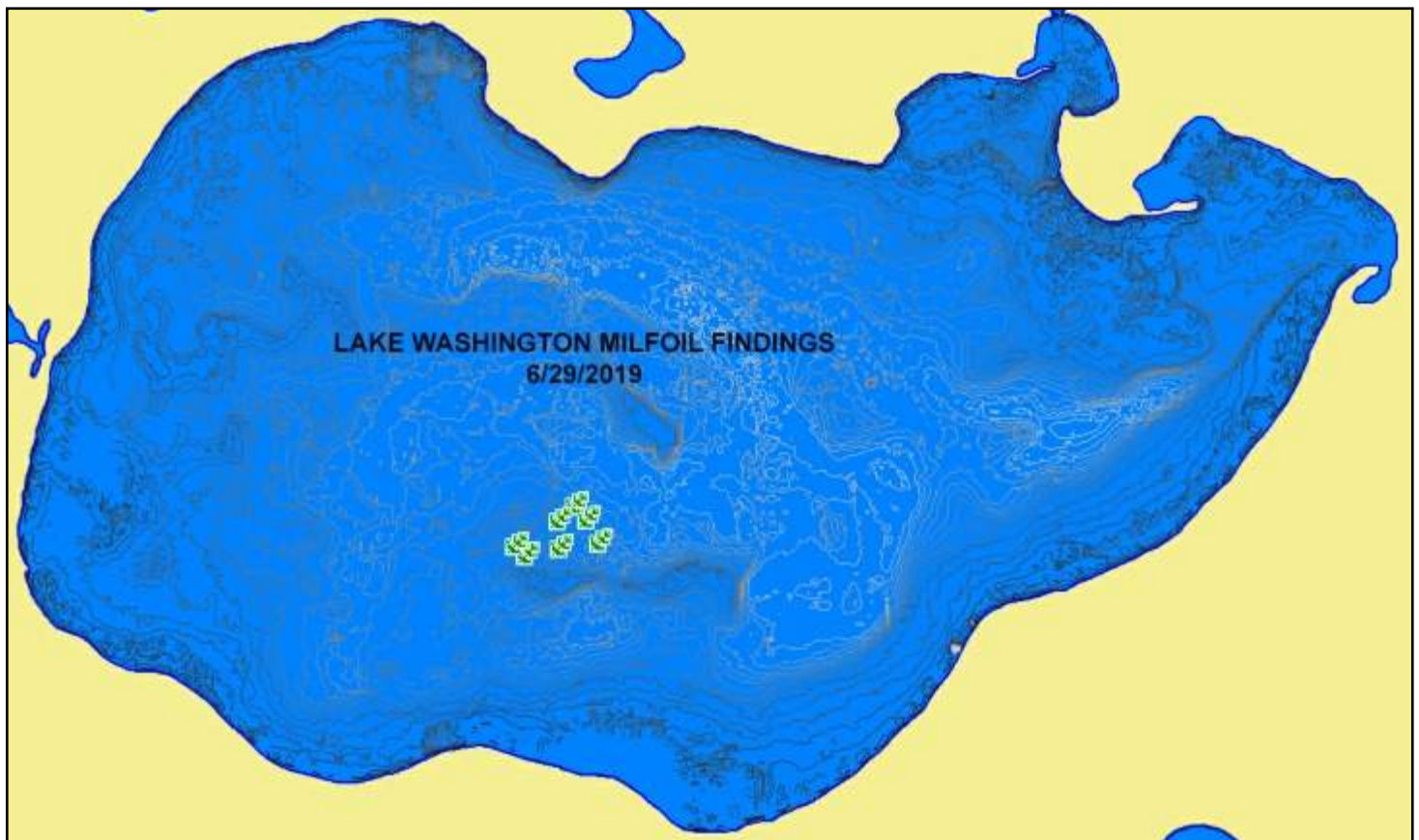
Aquatic Invasive Species

By Mark Johnson

On June 22nd, Ron Bubany and I kicked off our annual vegetation surveys with focus on Eurasian Water Milfoil. Before I go into this year's results let's review a little recent history.

- 2013: This was the last year that our lake was treated for Eurasian Water Milfoil. 146 acres were treated.
- 2014-2017: No Eurasian Water Milfoil was detected during our vegetation surveys.
- 2018: LWIA hired Limnopro to survey our lake for all types of invasive species. During their survey, they found 3 way points that had traces of Eurasian Water Milfoil. These way points were all in 10 feet of water and were concentrated in the same general area. At this depth the milfoil was not hindering lake activities.

The first vegetation survey of 2019 consisted of sampling 60 way points throughout the lake. Of these 60 way points, we found traces of Eurasian Water Milfoil at 2 of 60 way points. Both way points were in 9 feet of water and just south of where it was found in 2018. The map below shows the locations where Eurasian Water Milfoil was found this year.



The good news here is that the return of milfoil to our lake has been slow and that it is found in deeper water where it is not as likely to cause problems. In a second follow up survey we sampled 34 more way points and did a concentrated survey in the areas that Eurasian Water Milfoil was found earlier to determine its range and density. An additional five locations were discovered. Although we are sad to have found this, it shouldn't cause any problems.

In the upcoming month or so we will do more work with Limnopro to survey and provide recommendations on next steps. More to come and with updates in the fall newsletter.

Watershed Report

By Skip Sustacek

There are three factors which can significantly affect the quality of a lake. They are:

- Total Phosphorus
- Total Suspended Solids
- E. Coli (contained in runoff from feed lots)

Every year we analyze the first two on the list. We do not concern ourselves with E. Coli since there are no feed lots near by.

LAKE WASHINGTON WATERSHED INLET LOCATIONS



We have received the proper supplies needed to do this year's testing. Now we are waiting for a 1 inch or greater rainfall to test against.

As you can see, we have 15 inlets around the lake. Our plan is to test the bigger three. We will move forward to the other areas after the first three tests are completed.

On June 28th, testing samples were taken from three locations. Stand Pipe east of Ellsworth Landing, Skip's pond, and the Warren Nelson culvert on the north side. Dave Rathe immediately transported the samples to the testing company, RMB Labs, for analysis (the samples have to be delivered quickly to the testing company before they decay).

We will update results for you in the fall newsletter.

Skip, Dave and Mike

Walleye and Anglers Survey

By Steve Grotbo

He noted the walleye population on Washington has been on a decline the past 15 years.

At the Membership Meeting on May 4, Tanner Stevens, Assistant Supervisor at the Hutchinson DNR Fisheries Office talked about the Walleye and Anglers Survey they are conducting for the next 3 years including Manuella, Stella, and Lake Washington. He noted the walleye population on Washington has been on a decline the past 15 years, especially when compared to the gill net study from 2001 when a record high catch was observed.

The DNR will be looking at the percentage of walleye being harvested and their movement between lakes.

Tanner said that during the capture and tagging portion of the study, the DNR set 13 large frame trap nets on Washington, 6 on Stella, and utilized nighttime electro shocking on Manuella, Stella, and Washington. In total, the Hutchinson DNR office tagged 1800 walleyes combined from the 3 lakes. 1200 were on Washington with half of those fish coming from the 2017 year class in the 10-12 inch category. The largest walleyes captured were 28 inch females. 450 walleyes were tagged on Stella that were mostly large adults. Tanner noted it was a bit unusual to see such a large grouping of similar sized fish on Washington.

He explained the tags: they have a 4 digit number on them and MN DNR phone number of the Hutchinson office. The DNR is asking people who catch a tagged fish to inform their office with tag number, fish length, capture date, and if you harvested the fish. He noted it was not feasible or fiscally possible to award prizes for those participating in this study.

When asked if the study was a good use of tax payer dollars, Stevens recited a figure from a USFWS survey that a fishing trip by people local to the lake can add about \$50 to the economy. He also noted that study costs, tags, fleet, and employee time are paid out of the Fish and Game Fund, entirely funded with license dollars and federal excise taxes on angling sporting goods rather than from general fund tax dollars.

Because walleye tend to do better in turbid waters, the DNR will be attempting to compare populations prior to zebra mussels and present water quality conditions. Research across the walleye's North American range note that walleye have preferred conditions relating to light levels/transparency as well as temperature. As waters clear, whether naturally or from the introduction of invasive species, temperature increases and habitat components change, in some cases making lakes less favorable for walleye. Stevens noted that with the introduction of zebra mussels to a body of water, research shows a large upward trend in numbers initially then a drop off in numbers to a more mid-level stable population.

Regarding cormorants effect on fish populations, Tanner shared that they tend to eat what is easiest to find/catch. The recent increased DNR fish surveys have not seen a drop in the total biomass of fish in Washington, nor fluctuations in abundance that are outside of normal cycling of fish populations. Regarding stocking of walleyes: Washington has been on a schedule of stocking fry every 2 years (estimated at about 1.5 million). They are considering cutting the stocking rate in an attempt to get larger fish to survive, also to stock using local genetic fish (have been stocking with northern strain) – the Crow River walleye strain may be more adaptable. He did note that the 2017 year class population was a very good year and should show up in this summer's gill nets and increase the total net catch.

The 2018 crop looked good but was not sampled well enough yet to know for sure. They will continue the "every other year" stocking schedule. There were questions about stocking larger fish (they have a better survival rate) but you are also putting many fewer fish in the lake. They see stocking as a bonus to the native fish reproduction and viability. Also, the cost increases when stocking with larger fish and is deemed to not be as cost effective.

Tanner reported netting did not find a large number of carp, they did find a few in the 30-36 pound range. Washington is judged to not be an ideal pike lake, but the fish are present in a mix of sizes. The Hutchinson DNR office is finishing the pan fish survey in May. Thus far they have netted over 1,000 blue gills and many 20 inch small mouth bass. Summer gill net and trap net survey will occur in late July, and there will be some special yellow perch netting in September and walleye young-of-year electro fishing in October.

(updated by Scott Mackenthun)

Walleye and Anglers Survey Tag Update

By Scott Mackenthun

...more anglers targeting bass than walleye.

As of today, 6/20/2019, we have 30 tagged fish reported from anglers as we are close to closing our sixth week of angling. Fishing effort remains hit or miss, with more angling on weekends and more anglers targeting bass than walleye.

A small club of anglers is planning to fish a bass derby this Saturday and a permitted bass tournament is scheduled on Washington and Stella the second Saturday of August. Anecdotally I've heard that many bass leagues have tried Washington or Stella or plan to later this year as a result of high water near St. Cloud or the Metro. Unconfirmed on my part, since clubs are exempt from tournaments if they don't have over 25 boats or pay more than a \$25 entry fee.

Huge Northern Pike eating large Northern Pike!!



Walleye Population and Angler Study

By Steve Grotbo

Tanner Stevens (DNR) gave us a lot of information at the pork chop dinner on the study. He was provided with the list of questions / concerns from the association members beforehand. I really appreciated the honesty and straight forward responses Tanner gave during the Q&A session. Steve Ullom took minutes for those not able to attend which are available as part of the June board meeting minutes on the website (https://www.lakewashingtonassn.com/minutes/minutes_2019-06-04.php).

Bryce has since been hired as the “creel clerk”, which is the person who surveys the anglers. His report indicates that most people on Lake Washington are fishing for bass. I think this is more to do with lack of walleye though.

This study certainly has a lot of interest with the Facebook post on the jaw tags for the walleye reaching 35,254 people (198 shares with 5,367 people clicking on the picture). Out of the 1800 walleyes tagged, only 18 people have called in to indicate finding for the month period following fishing opener. The DNR was happy enough with these numbers, but that seems very low to me.

The study goes for three years. If you catch a tagged fish, you can report it to the Hutchinson DNR fisheries office by either calling (320-234-2550) or emailing (Hutchinson.fisheries@state.mn.us). Include the lake caught, date, length, and if the fish was kept or released.



Be A Good Neighbor

By Ron Bubany

Greeting your new neighbors is a polite gesture that can help you begin a positive relationship with people as they move into your neighborhood. You can help alleviate the anxiety of moving into a new place by introducing yourself and members of the community and letting your new neighbors know that you're there to help if they need you. There are a number of ways to help welcome new people that move into your area, but they all have one thing in common: ensuring your new neighbors feel comfortable in their new home.

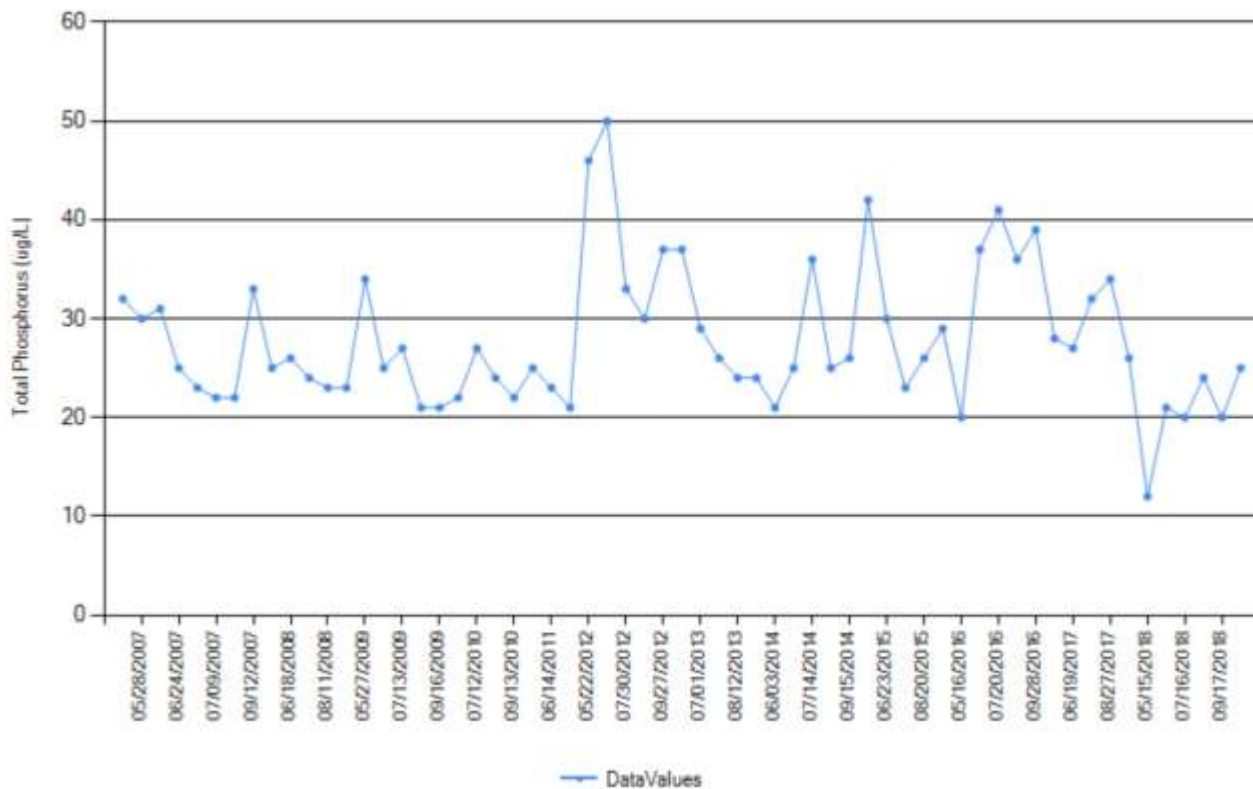
And be sure to encourage their membership in the Lake Washington Improvement Association!

Water Quality Testing

By Dave Rathe

We have taken two lake water samples, one on May 20th and the other on June 17th. The samples were analyzed for Total Phosphorus and Chlorophyll-a. These two parameters measure the nutrients and amount of algae in the lake water. The analysis was performed by RMB Environmental Labs out of Detroit Lakes, MN. For the May sample, total phosphorus was 25 µg/l (micrograms/liter) and the chlorophyll-a was 1.78 µg/l. Lake Washington has historical means of 27.7 µg/l of total phosphorus and 25 µg/l of chlorophyll-a. Chlorophyll-a reduction compared to the historical mean is likely due to zebra mussels and early spring measurement before the algae really gets going. For the June sample, total phosphorus was 27 µg/l (micrograms/liter) and the chlorophyll-a was 15.1 µg/l.

TOTAL PHOSPHORUS MEASURED SINCE 2007.



We have conducted three water clarity tests so far. Average clarity on May 20th was 10.0 feet, on June 3rd was 9.0 feet, and June 17th was 7.5 feet. By my observations, I think the weed-line is a little bit deeper than previous years. It would be interesting to hear of other people's thoughts on weed-line depth.

We plan to take 3 more water samples over the next 3 months and measure clarity 6 more times during that period. At the end of the summer all data collected will be submitted to the Minnesota Pollution Control Agency.

If anyone is interested, all Lake Washington water quality data can be viewed on RMB Environmental Labs web site. www.rmbel.info

Thank you Mike Wosmek for helping gather water quality samples and data.

I-LIDS (Internet – Landing Installed Device Sensor)

By Dave Rathe



We are able to renew our MN DNR Special Use Permit allowing the I-LIDS system to be installed at Ellsworth landing. The permit is good through 2021. Thank you MN DNR Parks & Trails out of Spicer MN for approving our permit.

We have had some issues with the audio messages not being played even though video is being captured. There were two problems, both have been resolved. (Bad speaker and software bug introduced during the last software update.)

Thanks to Skip Sustacek and Mike Wosmek for helping install and troubleshoot the audio problem.

We believe the I-LIDS system continues to be effective in improving boater compliance to MN DNR rules regarding boat decontamination prior to launching or leaving the landing. Boaters are reminded via audio messages to clean weeds and debris from their boats/trailers, drain live-wells and bait wells, keep all drain plugs out while traveling, and dispose of unwanted bait in the trash.

PUMPING & DRAIN CLEANING, INC.



1-800-898-4936
320-243-4267
320-693-1000

- Septic Tanks
- Rotary Line
- Holding Tanks
- Hydro-jetting
- Grease Traps
- Frozen Sewer & Water lines
- Car Wash Pits
- Raiser Updating
- Filter Maintenance
- Pump Repair & Replacement
- Video Inspection "Camera"

Licensed - Bonded - Insured - Locally Owned & Operated

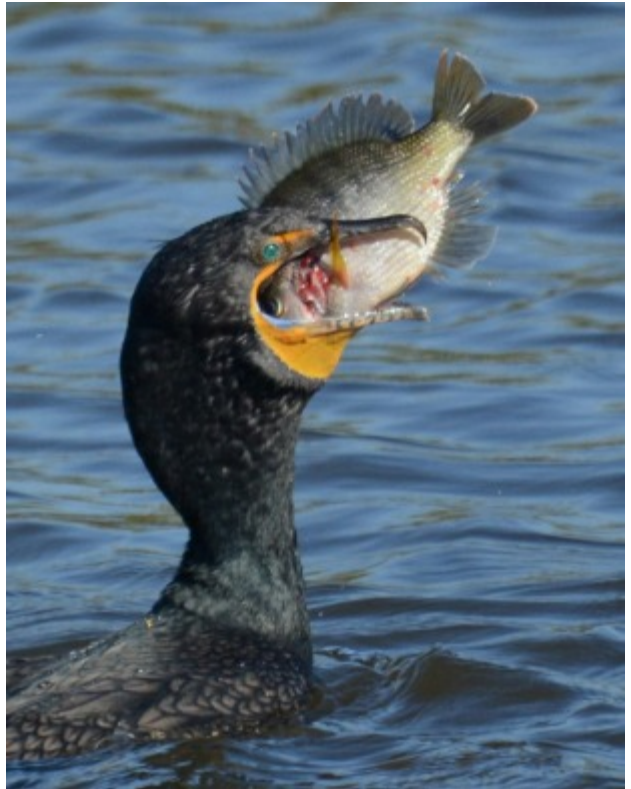
Refer to this ad for a 10% discount on your next septic pumping.

Cormorant and Pelican Committee

By Steve Grotho

The cormorant and pelican committee is struggling to get any action on solving the issue. The DNR has stated that the cormorants are going after the easy targets and not severely affecting the fishing. I do not think any of us are believing this statement.

The bird count data is being looked at again as the 2014 to 2016 data showed a direct correlation of bird count with available fish. Cindy Hewitt has just joined the committee and is looking forward to hearing from members on any ideas and concerns.



Zebra Mussels

By Dave Rathe

Mike Wosmek on Memorial Day installed the zebra mussel “hotels” (settlement plates) in the same locations as last year. Thanks Mike.

There is no need to report zebra mussel findings, as I’m sure people have noticed, they’re all over the lake.

Water Safety

By Steve Ullom

YOU ARE RESPONSIBLE FOR SAFE BOATING

As the boating season goes into full speed, it is time for all of us to take a moment and refresh our memories about the rules for boating. Life jackets are life savers. Going fast can be fun, but remember there are No Wake zones and safe boating practices that include staying 150 feet away from swimming areas /swimmers/ and docks. Speed is restricted when approaching shorelines or dock areas.

The Minnesota [Boating Guide](#) provides additional information about boating operation and safety requirements. Safe boating includes responsible actions on the part of all operators, this includes keeping trash and other debris from being left in the water.

As a lake community we are responsible for having fun on the water while maintaining safe watercraft operation and water quality of our lake. Enjoy

Memories

By Pat Hanson

This weekend I have been thinking of skiing on Lake Washington.

Do you remember the boat in the movie 'On Golden Pond'? My Dad bought an outboard Crest liner and told us we needed to ski. My brother Mike got the ski equipment and I learned to drive the boat while one of my parents was the 'lookout'. I learned a bit about skiing and tried skiing.

Then a neighbor moved next door with a larger motor and newer boat. He loved skiing and would teach us tricks on skis. He taught anyone that would want to learn to ski (all ages). During the Fourth of July week Don Holmgren would put on shows on Lake Washington. He would slalom, ski with a chair/stool, ski bare foot skiing, boarding, knee boarding, and kite flying. As time went on he would update with larger motors and pull pyramids of skiers. One skier was selected to the United States ski team! There were hundreds of people Don taught to ski on Lake Washington.

Many people were reminiscing and watching skiing videos and one of Don's drivers said that they went through 1,500 gallons of gas just for skiing in the season. I never learned to use the bear claw but many sure did! Can't wait for the warm weather and the purring of the motor waiting for a skier to take hold of the rope. Maybe time to get the wood skis ready for a run on Washington.

Now as I look out I see many pontoons, Jet skis, long boards, sail boats, and fishing boats on the lake. On smooth water days I don't see the skiers but sure see people pulling/towing others on the inflatables.

I wonder what my new and only grand daughter will want to do.



Committee Reports

SHORELINE CAPTAINS/MEMBERSHIP COMMITTEE

By Cathy Klehr

Thanks to all who have renewed their membership. To recognize these people, we have included a list of paid members in this newsletter. We also have this listed on our website and update it monthly. Currently we have 223 paid members. Without your support of our association we would not be able to maintain the quality and beauty of our lake. Your continued support is appreciated and needed in our effort to keep Lake Washington clean and healthy for **ALL** to enjoy throughout the year.

The Shoreline Captains have been busy visiting homes in their area throughout the summer delivering lake maps. If you have been missed, contact your Shoreline Captain to make arrangements to receive your copy.

Special Thanks to all the Shoreline Captains for their time and effort they put into reaching out to lake residents:

Sheryl Faust	Jenny Kjell	Gloria Kotila	Nancy Finkenaur
Jenna O'Brien	Grace Brinkmann	Pam Coppa	Mary Jo Lyke
Bob Paulson	Jim Barnes	Cathy Klehr	Sandy, Mike Wosmek
Phil Flores	Sharon, Gary Daniels	Christine, Steve Ullom	John Bartz
Connie Paulson	Ruth, John Fink	Jo Lukes	

For changes of address, phone, e-mail or any other information we should be aware of, please contact us at membership@lakewashingtonassn.com

FINANCE / FUND RAISING COMMITTEE

By Lyle Walker

Memberships to date this season number 228 and have generated \$11,900 for the Lake Association. This is an increase of 22 memberships over the same time last year.

Required government financial reports for the fiscal year ended **April 30**, 2019 have been completed and filed.

To date this season, 74 members have made donations through the Lake Association to the Dassel Volunteer Fire Department. This is a convenient way for members to support the Fire Department.

There are no unpaid bills on hand and the current cash position of the Lake Association is \$136,300.



Committee Reports (continued)

MCAL

By Pat Hanson

MCAL stands for “Meeker County Association of Lakes” and I represent our Lake Washington Association at the quarterly meetings.

MCAL represents the county’s sixteen Lakes and fourteen lake associations:

- Dassel Area Environmental Association (Long Lake and Spring Lake),
- Big Swan Area Lake Association,
- Lake Washington Improvement Association,
- Collinwood Lake Community Association,
- Lake Jennie Improvement Corporation,
- Lake Stella Improvement Association, Manuella Lake Association,
- Dunns and Richardson Lake Association,
- Lake Francis Area Recreation & Conservation Club,
- Lake Minnie-Belle Improvement Association,
- Star Lake,
- Long Lake Association of Grove City,
- Clear Lake Property Owners, Inc., And
- Koronis Lake Association.

We share information on our lakes' activities and concerns of individual lake associations. Every representative has one vote. MCAL oversees checkout, maintenance and access to equipment used to monitor dissolved oxygen, temperature, pH, conductivity and sampler. This organization lets us know about the grants and monies available for Sharon Daniels to start the grant processing. Dave Rathe also attends our meetings. George Kramer is President of MCAL. We thank Dan Fitterer for leading us for years. I am responsible to attend these evenings in Litchfield and report back to our Lake Washington Association board.



Committee Reports (continued)

SOCIAL COMMITTEE

By Sandy Wosmek

The calendar says the first day of summer has arrived ----- time to enjoy the lake and the summer days and nights.

We had our annual May Pork Chop meal and meeting on [May 4th](#). It was well attended and seemed to be enjoyed by all. Good comments on the meal, THANKS to my husband and son, Mike and Joel for grilling the chops.

People seemed to enjoy listening to our speaker, Tanner Stevens, DNR Assistant. Area Supervisor, and also had questions for him. THANKS to all you were able to attend.

Now looking forward to our annual Pot Luck ---- Mark your calendars for [Saturday, Aug 3](#)

Pot Luck – Dassel Rod and Gun Club.

- Social Hour - 5 p.m. (please bring your own refreshments)
- Meal - 6 p.m. Meat sandwich provided by the lake association - this year EZ Dock and Lift has offered to pay for this. Please thank them.
- Please bring a dish to share, your plates and utensils.
- Open Discussion after meal- if anything to discuss or answer.
- Raffle for door prizes

Hope a good number are able to come to the pot luck. Looking forward to meeting some of our new lake neighbors that have recently moved to Lake Washington.

Annual Pot Luck, [Saturday, August 3rd](#) - hope to see you.

Have a happy and safe summer.



LWIA Paid Member Listing

Monday, July 1, 2019

Name	Name
Abeln, Rick & Bonnie	Broll, David & Lori
Adams, Bruce & Janice	Brown, Carol & Ben
Andersen, John & Caroline	Brueggemeier, Family
Anderson, Curt J. & Pennie	Brueggemeier, Ray & Julie
Anderson, Keith & Wendy	Bruhjell, Arlen & Kathy
Anderson, Ken & Mary	Bubany, Ronald & Rita
Anderson, Randy & Mary	Bull, William & Shirley
Arerns, Tim & Laura	Burgstahler, Neil & Patty
Aubol, Sally & Judy Strolberg	Burrill, Connie
Bahr, Mel & Marilyn	Burt, Steve & Diana
Bahr, Richard & Carla	Carlson, Lisa
Baker, Deborah & Vern	Christianson, Gary & Peggy
Ballard, Kenneth & Jane	Coppa, Rodger & Pam
Barnes, James F. & Annette	Cowan, Bill & Bev
Barsness, John & Jeanette	Dalen, Dean & Theresa
Bartz, John	Daniels, Gary & Sharon
Becker, Kris & Dean	Danielson, Scott & Pam
Bengtson, Clarice & John	Davis, Lisa
Bengtson, David & Susan	Determan, Mark
Benjamin, Charles & Sharon	Drew, Scott & Donna
Benson, Gary & Cindy	Dullinger, Craig & Dr. Anita Strei
Benson, Keith	Eichten, Noel
Benz, Tim & Anastasia	Engh , Andy & Vicki
Bergquist, Lail	Erickson, Terrie
Betker, Gene & Barb	Evjen, Jay & Julie
Betker, Paul & Jan	Faust, Sheryl H. & Dan
Blake, Jeff & Amy	Fay, Margaret
Blake, Jon R	Fernstrom, Gaylord & Jeanenne
Bock, Nelson & Bev	Field, Mike & Cheryl
Bollman, Don & Jane	Fink, John E. & Ruth
Bonniwell, Jack & Dianne	Finkenaur, Bob & Nancy
Borg, John & Kate	Flores, Phil
Bowman, Wayne & Susan	Furst, Jerry & Addie
Braun, Chris & Suzanne	Gayner, Tom & Jo Ann
Brinkmann, Grace	Gillman, Brice & Chantel

LWIA Paid Member Listing

Monday, July 1, 2019

Name

Ginsburg, Ladd & Dana
Glaser, Tom & Joyce
Gramentz, Alan & Judy
Grams, Bill & Jane
Griep, Mary
Griffith, Robert & Dianne
Grotbo, Stephen & Elizabeth Walke
Haag, Scott & Kay
Haefner, Andy & Marcia
Hall Steve, Danny Della Lana
Halonen, Paul & Heather
Hammers, John & Donna
Hansen, LaVonne
Hansen, Ronald & Mary
Hanson, Allen & Melanie
Hanson, Patricia A. & Larry R.
Hauer, Tom & Patty
Haverkamp, Judy
Heck, Darryl
Heimerl, Duayne & Sue
Hendrycks, Judd & Julie
Herd, Daniel & Sheila
Hesse, Chad & Vanessa
Hewitt, Troy & Cindy
Hoffman, Mark & Lisa
Hogan, Jane & Paul
Holmgren, Donald
Horacek, Jeff & Denise
Horman Rich & Sue, and Deb Currie
Idle Wave, Association
Jans, Dennis & Kristin
Jensen, Jerry
Johnson, Dave & Cindi
Johnson, Keith & Laurie
Johnson, Mark & Laurie

Name

Johnson, Richard & Marcia
Johnson, Todd & Julie
Kadelbach, Gene & Julie
Kaiser, Kraig & Kelly
Karlson, Dave & Bev
Keeler, Susan
Kelzer, Robert & Stacy
Kerstein, Robert & Ruth
Kieffer, Gregory
Kjell, Steve & Jenny
Klehr, Cathy
Kluver, Tom & Jacqueline
Komarek, Dan & Ruth Lotsof
Koski, Jim & Megan
Kost, Beth
Kotila, Larry & Gloria
Kotzer, Steve & Amy
Kraemer, Thomas & Sandra
Kraft, Joel & Catherine
Krogstad, Todd & Traci Larsen
Larson, Mark & Jan
Lindquist, Dick & Lynne
Longhenry, Tom & Cindy
Loosbrock, Kelly & Holly
Lukes, Fritz & Jo
Lundeen, Todd & Carlynn
Lyke, Thomas & Mary Jo
Macho, Tom & Marilyn
Madson, Randy & Linda
Maiers, Matthew & Ashley
Manthei, David & Pam
McDonald, Mark & Ashley
McGraw, Linda
McKimm, Mike & Renae
Messner, Michael & Cheryl

LWIA Paid Member Listing

Monday, July 1, 2019

Name

Milbrandt, Pat & Wally
Milne, Paul & Elizabeth
Moorhead, Kevin
Moses, Cammy & Karl Tarning
Motzko, Jean
Nathe, Jean
Nelson, Tom C. & Debbie
Neu, Kenneth G. & Mary
Nielsen, Ron & Joyce
Noplos, John & Janice
O'Brien, Terry & Jenna
Ohme, Daniel G. & Sheryle
Olsen, Mark & Dianne M.
Ooley, Bill & Bev
Parks, Doug & Lisa
Paulson, Amy
Paulson, David & Connie
Paulson, Robert & Sheila
Penkert, Emmanuel
Peterson, Daniel
Plath, Kyle & Leah
Quast, Douglas & Connie
Quinn, Reagan
Rasmussen, Brett & Lisa
Rasset, Gary & Robyn
Rathe, Dave & Sue
Read Tim, & Mary Jo Loncorich
Reed, Mark & Lynn
Regenscheid, Ron & Steph
Rettke, DuWayne & Janet
Rettman, Georgia
Rickeman, John & Donna
Riggenberg, Wendy
Rogers, John & Brenda
Roiger, Randy & Angie

Name

Rothstein, Dan & Abby
Saber, Tony & Terry
Samson, Kalin & Nancy
Sandberg, Michael & Rebecca
Sandstede, John
Schafer, Delaino & Suzanne
Schierman, Mark & Wendy
Schiller, Michael & LuAnne
Schmidt, Lynn & Sue
Schmidt, Mark & Linda
Schmit, Mark & Jim Bottema
Schroeder, Doug & Kathy
Schuette, Dennis & Sandra
Schugel, Joachim & Leanne
Schultz, Ray & Evonne
Schutz, Ricky & Janell
Schwarzrock, David
Schwinghammer, George & Susan
Seemann, Kenneth & Virginia
Seitzer, Bill & Diane
Servin, Jeanette
Settergren, Dale & Jane
Shaner, Dean & Jeanette
Skalberg, Kenneth L.
Steiner, Owen & Mary
Stenmark, Larry & Karen
Strom, Bob & Arlene
Stueber, Russ & Lois
Sustacek, Harvey & Sharon
Tenold, Loren & Anne Mahoney
Tarning, Wanda
Theobald, Tom & Beth
Thompson, Wayne, Jerald & Brenna
Trautman, Allan & Susan
Ullom, Caroline & Joe Carroll

LWIA Paid Member Listing

Monday, July 1, 2019

Name

Ullom, Steve & Christine

Van Horn, Lee K. & Lori

Verby, Steve & Joyce

Vigliaturo, Shari

Walker, Lyle & Georgiann

Wallace, Bruce J.

Walls, Sue

Wanzek, Denny & Pat

Ward, Jean & Steve

Wendinger, Leon & Shirley

Westlund, Dave & Karen

White, Michael & Karon

Winter, Dean & Kimberly

Wolf, Gary

Wood, Mark & Lynn

Woodford, Dale & Margo

Woolverton, Paul & Rebecca

Wosmek, Michael & Sandra

Name