



Spring 2017

Is swimmers Itch
on the rise? Find
out here!



LAKE WASHINGTON

2017 ICE OUT

3/27/2017

SPRING NEWSLETTER, 2017

Lake Washington Improvement Assn.
PO Box 68 Dassel, MN 55325
www.lakewashingtonassn.com
Email: info@lakewashingtonassn.com

Contact Us



General Issues:

info@lakewashingtonassn.com

Membership Changes:

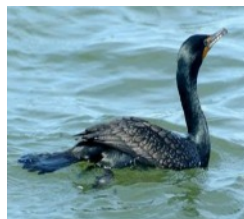
membership@lakewashingtonassn.com

Lost and Found:

lostfound@lakewashingtonassn.com

The Lake Washington Newsletter is published three times a year (Spring, Summer and Fall) by the Lake Washington Improvement Association. It is distributed free to lake property owners and friends around Lake Washington.

4



Cormorants and Pelicans

6



Watershed

7



Zebra Mussels

9



Water Quality

10



I-LIDS

11



Committee Reports

End Of The Dock

By Ron Bubany



- Once again, cormorants are a hot topic in our newsletter. Steve Grotbo connects these birds to swimmer's itch and also points out the relationship of bird counts to fish counts. See his article.
- Skip is back at it again with the watershed improvements. Read what's been done and what is planned. If you run into Skip be sure to express your appreciation for the work he and his buddies are doing to improve our lake quality.
- Dave Rathe has become a man of all trades for us as he reports on water quality, zebra mussels and the I-LIDS camera. Many thanks, Dave!
- I don't have a milfoil report in this issue as there have been no weeds present for two years now. We will be conducting a full length assessment in May just to be sure the plants have not returned. A report will be filed for you in the summer newsletter.
- Please take note of our advertisers. These good people, in addition to advertising their services, are also helping us with the costs of producing the newsletter. Thank them when you see them and please give them your business.

An advertisement for Midwest Garden Company. The background is a light green color with a decorative vine graphic on the left side. The company name "Midwest Garden Company" is written in a large, dark brown, serif font. Below the name, a list of products is provided: "Annuals, Perennials, Trees, Shrubs, Wild Bird Supplies, Garden Accents, Gifts, Seasonal Items". The address "21392 CSAH 18 Dassel, MN 55325" is listed in a bold, dark brown font. The website "www.midwestgardenco.com" and phone number "320-275-9514" are also included. Hours of operation are listed as "Tues.-Sat. 9-6, Sun. 1-5". A photograph of a rustic log cabin with a green door and windows is positioned on the right side of the advertisement.

**Midwest
Garden Company**

Annuals, Perennials, Trees,
Shrubs, Wild Bird Supplies,
Garden Accents, Gifts,
Seasonal Items

**21392 CSAH 18
Dassel, MN 55325**

www.midwestgardenco.com 320-275-9514 Hours: Tues.-Sat. 9-6, Sun. 1-5

Cormorants From Another Viewpoint

By Steve Grotbo

In the fall newsletter we gave DNR official Scott Mackenthun a forum for giving their side on the cormorant issue. His focus was on the effect of the cormorant and pelican on the fish populations and trying to show that actual fish populations have not gone down significantly. Well I can say from my view that I used to fish the lake most weekends starting in 2000 and now rarely go out as the haul kept getting less. So we will just chalk that up to the fish getting smarter.

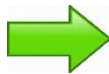
Now we use the lake for other recreational activities. Unfortunately, the cormorants have really started to make these other recreational activities less available. Years ago, you would hear about the odd case of swimmer's itch. Not too long ago you could be pretty much guaranteed that swimmer's itch was gone before the first weekend of July. Now everyone seems to know someone with the spots all the way to the end of July. The CDC (Center for Disease Control and Prevention) says swimmer's itch is a parasite spread by waterfowl poop. Well I can say the only real abundant waterfowl present in July is the cormorant and pelicans, so it does not take rocket science to figure out what is to blame. So hopefully the DNR actually takes action on these birds so we can get our Fourth of July holiday back.

The CDC also indicates that swimmer's itch is an allergic reaction. I consider myself allergy free, but I still get spots. To date I have yet to meet someone who is not allergic to this parasite. I am sure that person does exist, but for now I am saying this issue affects everyone using Lake Washington.

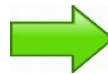
The Swimmer's Itch "Cycle"



Incubates in Snails



Migrate to Cormorants



Cormorants poop the parasites into the water. We have all seen plenty of this poop on the island at Pigeon Lake.



RESULT:

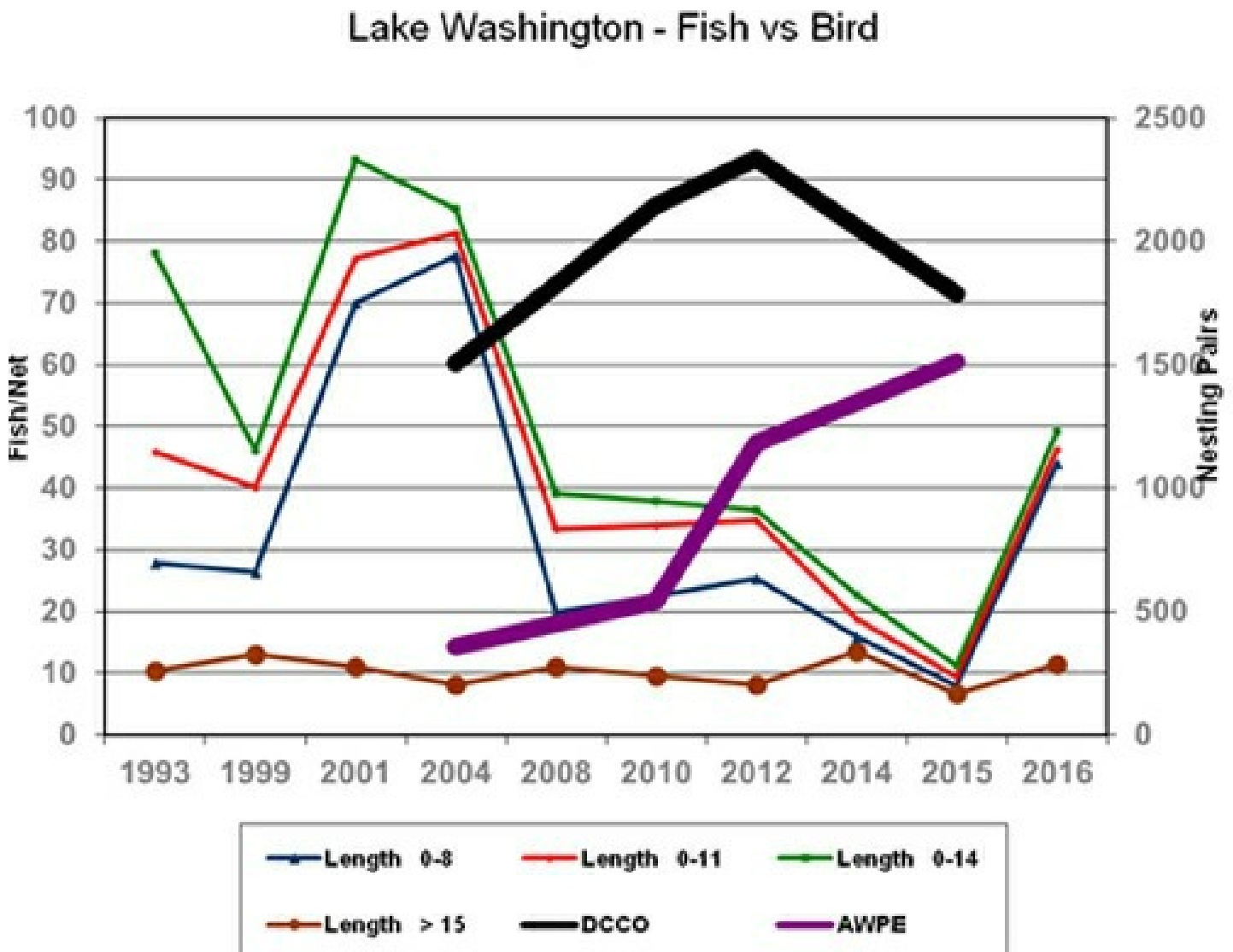
Larvae attach to swimmer and cause misery for days!

Cormorants From Another Viewpoint (cont.)

Rick Fernstrom, head of the Lake Washington Cormorant committee, wants to add that Scott pointed out the increase in fish, but failed to point on the decrease in cormorant population. That is the cormorant population dropped 23% between bird surveys of 2012 to 2015 and very close overlapping with that time period, fish 0-14 inches net count increased 117% between DNR surveys of 2014 and 2016.

Rick and team has always argued with DNR that in the event of a bird population drop (depredation order, new castles disease, in-season migratory exit, etc.), an increasing fish net count would be further confirmation that cormorants are significantly impacting fish populations. We now have that correlation.

The following chart shows the fish population surveys by length of fish on the thinner lines. The bird, Double-crested cormorant (DCCO) and American White Pelican (AWPE), surveys are the bolder lines. This clearly illustrates the cormorant issue.



Watershed Report

By Skip Sustacek

If you remember in last fall's newsletter we talked about 213th St work to be done. At that time we wanted to think through this situation and come up with a solution that would satisfy both the land owner and the Lake Association people living north of the intake. We have come up with a plan that will satisfy all the parties.

The Gordy Nelson family, neighbors and township board members have been a pleasure to work with. We will add a 18" x 24" double wall extension perforated with 64 3/8" holes. Then more rock will be added to help support the extension and at the same time help clear up the water. We have the installation left to do and are waiting for warmer weather to come.

Next we will be moving to 233rd St on the north side of Lake Washington. We should have more to report by your fall newsletter.

Thank you all for your support.



Zebra Mussels

By Dave Rathe

Last year 3 zebra mussels were found in Lake Washington on our monitoring plates. This year we are again going to locate 11 monitoring plates around the lake in approximately the same locations as last year (see the map below). Mike Wosmek and Dave Rathe will deliver the monitoring plates in April or early May. Residents who have monitoring plates on their docks will be asked to check the plates monthly for evidence of zebra mussels. At the end of the summer Mike Wosmek & Dave Rathe will collect the monitoring plates, inspect each for zebra mussels and report results to the MN DNR. Data from monitoring would be used in the future, if and when, zebra mussel treatment options become available.

The zebra mussel life cycle starts when eggs are fertilized by sperm in the water column. The larvae hatch in less than a week. The larvae are free swimming for about 1 month and are carried downstream in the water column before attaching to a hard surface or vegetation. At the start of the juvenile phase, they fall to the bottom, where they are capable of moving via a “foot” until they find a hard surface, on which to attach. The zebra mussels mature in approximately 1 year and can live for 3 to 9 years. In a season, a female can lay as many as 1 million eggs, however, the mortality rate to get to maturity is high at about 99%. They feed by filtering algae out of the water around 1 quart per day.

If a significant population of zebra mussels forms in Lake Washington, the impacts will likely be an increase in water clarity, aquatic plants will be able to take root in deeper water due to the improved water clarity, mussels will attach to any hard surface including docks/boat lifts/boats lift in the water, they will out compete native mussels resulting in large decline in native mussel population, shells from dead mussels become quite sharp and a hazard for swimmers. All-in-all, a pretty nasty aquatic invasive species.

Zebra Mussel

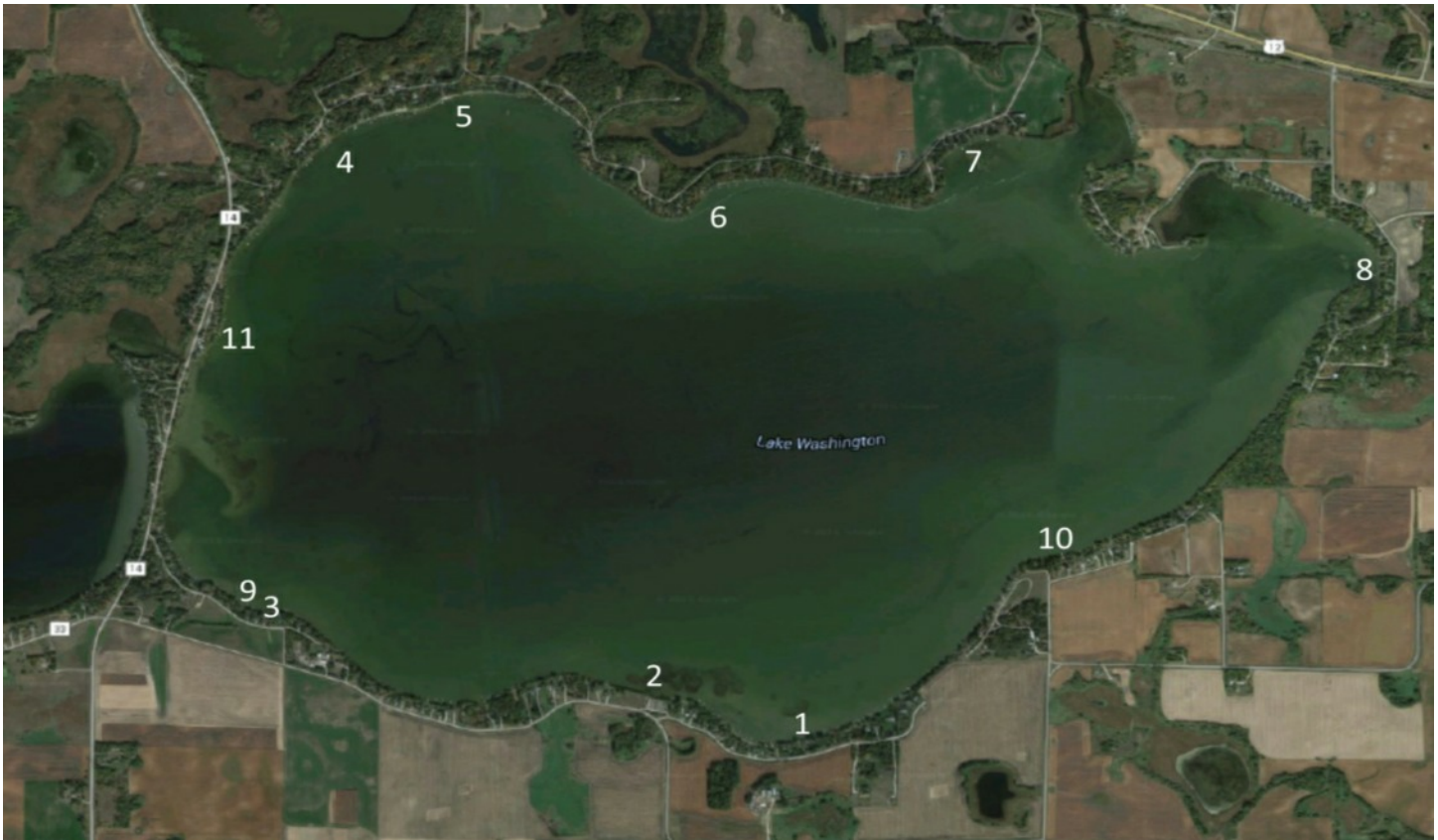


Capture “Motel”



Zebra Mussels (continued)

Zebra Mussel Monitoring Locations



Creating Outdoor Dreams...
EVERY STEP
of the way!

Does your outdoor space reflect your personal style? Do tough landscape issues keep you indoors? Trust our experienced team to transform your outdoor space from simply functional to truly exceptional.

Our professional design team works closely with clients like you to add beauty and personality to even the most challenging landscapes.

320-274-6336 or 877-365-4034

Lake Property Landscape Specialist

Contact Us TODAY
To Plan Your
Landscaping
Projects!

Backyard REFLECTIONS INC
We Create Outdoor Dreams

www.backyardmn.com | Annandale, MN

Water Quality Testing

By Dave Rathe

We are planning to do water quality testing again this year. We will take water clarity readings (via secchi disc) starting in May twice a month. We'll also be taking water samples once per month and having them analyzed for phosphorus (nutrients in the water) and chlorophyll-A (a measure of algae concentration). Our testing will conclude in September and the results of the water clarity tests will be reported to the Minnesota Pollution Control Agency and the chemical analysis results will be available on the RMB Environmental Labs website. Water quality data is used to monitor long-term changes in Lake Washington.

Dean Shaner, Dan Faust, Skip Sustacek, and Dave Rathe did the water quality testing last year and are expected to volunteer again this year.



WE'RE HIRING!
Now seeking highly motivated
Landscape Foreman

This position will lead a crew and be the face of the company to the customer.

REQUIREMENTS:
3+ years experience with boulder/retaining walls, pavers, grading, irrigation, low voltage lighting, landscape machinery operation, reading landscape plans, Commercial Driver's License.

APPLY ONLINE TODAY
under 'About Us'!

landscape design & install • luxury curbing • irrigation • dock/lift

LANDSKAPINGS.COM
320.583.5988

I-LIDS

By Dave Rathe

Our video and audio system at Ellsworth will be setup again this summer around mid April. The audio message reminds boaters to clean all vegetation and drain water from boating equipment. 15 sec video clips are also recorded each time the ILIDS system senses someone using the landing (Note: There is a built-in 4 minute delay before ILIDS will play the audio message and record video again). Last year we did some fine tuning on the system to improve performance; focus, lens hood (shade early morning sun), trip sensitivity (to pick up vehicles in the far ramp), improved mounting base to eliminate wind vibration and the installation of an LED light for night video capture. One future improvement is planned this year, a magnetic sensor for improved vehicle detection. Tom Hauer and Dave Rathe will be installing the system this spring and monitoring boat launch video.



DARWIN TAVERN

— YOUR LOCAL BAR —

Open Monday - Sunday 7 AM - Close

Monday - Friday 3 PM - 6 PM
HAPPY HOUR
10 Oz Draft Beers
JUST \$1.25!!

KITCHEN HOURS
7 AM - 9 PM (Mon-Sun)
(Appetizers until 10 PM)

Breakfast DAILY
7 AM - 11 AM
(Sat & Sun Until 12PM)

f Find us on Facebook
Check us out on Facebook for the latest events, specials and more!
(320) 639-2011
324 North 1st Street
Darwin, Minnesota

UNDER NEW OWNERSHIP!

Committee Reports

SHORELINE CAPTAINS/MEMBERSHIP COMMITTEE

By Cathy Klehr

Your membership to Lake Washington Improvement Association is needed and appreciated to continually maintain the quality and beauty of our lake. Please take time to fill out the enclosed Membership Registration card and return in the envelope provided. Thank You for your support.

Thanks to the Shoreline Captains for keeping our neighbors informed about important lake issues. For a complete listing of all Shoreline Captains and their area, visit us on our Web site. If you are interested in volunteering your time, please contact me or any board member. You can also attend our annual SLC Kickoff meeting on Saturday, May 20th 9:30 at the Dassel Rod & Gun Club.

For changes of address, phone, e-mail or any other information, please contact us at membership@lakewashingtonassn.com

FINANCE / FUND RAISING COMMITTEE

By Lyle Walker

There has been very little financial activity since the end of the season last fall. That will change now with the arrival of spring and 2017 membership renewals along with the start of the many activities that are the Lake Association. We begin this season in a strong financial position with total available funds of \$115,800.



SAVE THESE DATES:

At Dassel Rod & Gun Club

April 21 Annual Fish Fry From 11-7

May 13 Fishing Opener, Starting at 6:30

Committee Reports (continued)

SOCIAL COMMITTEE

By Sandy Wosmek



Even after a fairly mild and easy winter it is good to see the lakes open and the trees and plants coming back to life ----- **SPRING HAS SPRUNG!!!!!!!!!!**

With spring arriving and May around the corner it is time to plan the Annual Lake Meeting.

•••Annual Meeting ----- **Saturday, May 6th**
Dassel Rod and Gun Club ----- **Pork Chop Dinner**

Social Hour -- 5 PM •(please bring your own refreshments)

Dinner -- 6 PM

•••Free pork chop, bean casserole,potato chips,cole slaw, bread, brownies,•coffee/koolaid.
Pork chops from Schroeders Meats. • Once again B & B Sports is paying for the chops.
Please
thank them when doing business•with them.

Meat Raffle & program -- to follow meal

•••••Committee reports

•••••Speaker

•••••Board Election

•••••Open Discussion