



Spring 2016

## KLEHR TO RETIRE!

Page 3



## ELLSWORTH LANDING TO RECEIVE NEW "I-LIDS" TECHNOLOGY THIS SPRING

Page 5



# SPRING NEWSLETTER, 2016

---

Lake Washington Improvement Assn.  
PO Box 68 Dassel, MN 55325  
[www.lakewashingtonassn.com](http://www.lakewashingtonassn.com)  
Email: [info@lakewashingtonassn.com](mailto:info@lakewashingtonassn.com)

---

## Contact Us

General Issues:  
[info@lakewashingtonassn.com](mailto:info@lakewashingtonassn.com)

Cormorant Issues  
[cormorants@lakewashingtonassn.com](mailto:cormorants@lakewashingtonassn.com)

Watercraft Inspection Program  
[inspections@lakewashingtonassn.com](mailto:inspections@lakewashingtonassn.com)

Membership Changes  
[membership@lakewashingtonassn.com](mailto:membership@lakewashingtonassn.com)

Lake Alerts  
[alerts@lakewashingtonassn.com](mailto:alerts@lakewashingtonassn.com)

Invasive Species Program  
[Invasive@lakewashingtonassn.com](mailto:Invasive@lakewashingtonassn.com)

Watershed Project  
[watershed@lakewashingtonassn.com](mailto:watershed@lakewashingtonassn.com)

Lost and found  
[lostfound@lakewashingtonassn.com](mailto:lostfound@lakewashingtonassn.com)

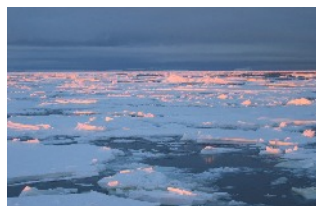
The Lake Washington Newsletter is published three times a year (Spring, Summer and Fall) by the Lake Washington Improvement Association. It is distributed free to lake property owners and friends around Lake Washington.

3



Ken Klehr, after 8 years' service, announces his retirement from the board.

4



2016 Ice Out

5



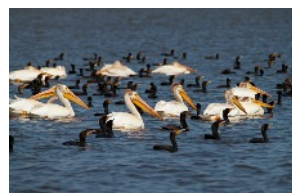
Watercraft Inspection Report

7



Watershed Update

7



Cormorants and Pelicans

8



Grants

9



Committee Reports

# Board Election Annual Meeting May 7th

*By Ken Klehr*

I have enjoyed being on the Board for the last 8 years with 7 of those years as President. Over this time I have seen our Lake Association become one of the most productive and proactive in the state.

We have had many success stories. To mention a few:



- Attained record membership.
- Achieved the IRS 501c3 designation for charitable organizations
- Developed and implemented a Eurasian water milfoil management plan while seeing two years without milfoil,
- Updated our Lake Directory
- Enhanced our newsletter format
- Completed a membership survey
- Redesigned our holding pond
- Developed vegetation survey and membership software
- Enhanced our Lake Association website
- Enrolled us in Face Book
- Maintained a great financial position

These accomplishments and many others are a result of strong Board members and your support.

With regrets, because of health issues (cancer), I will be resigning from the Board effective May 1. To assure a smooth transition I will continue to stay involved over the summer.

So now we have Board positions available. If you are interested in becoming a Board member contact any Board member for details or show up at the Annual Membership Meeting Saturday, May 7th.

# Ice Out

By Steve Grotbo

The official ice out date was March 17<sup>th</sup> this year, making it the second earliest.

The Minnesota DNR has the “Definition of Lake Ice Out” as follows.

*“The definition of lake ice-out varies from lake to lake, and individual to individual. For some, ice out occurs only when the lake is completely free of ice. For others, ice out is defined as the moment when navigation is possible from point A to point B. And yet for others, ice out is when 90 percent of the lake is ice free.*

*Due to the variable definitions of this rather subjective observation, the participating agencies attempt to contact the same individuals each year to maintain a consistent record for a particular lake.”*

The “official” ice out dates are now in the third generation for doing the tracking. It started with Hazel Gayner in 1954 with her son Dean Gayner taking over in 1999 and finally with Dean’s daughter Jenna O’Brian taking over in 2010.

The rule for ice out used at Lake Washington is that everyone must be able to get their dock in. Jenna has a number of volunteers around the lake who help keep her honest and report if too much ice is still present. In the end, it is her call.

So you can only judge ice out for Lake Washington from year to year and not compare it to ice out for other lakes. In looking at last year, the official date for Stella was April 2<sup>nd</sup>, but it was April 5<sup>th</sup> for Washington. In reality both lakes lose their ice about the same time, not three days apart.

1954 - April 9 <sup>th</sup>	1971 - April 15 <sup>th</sup>	1988 - April 14 <sup>th</sup>	2005 - April 8 <sup>th</sup>
1955 - April 1 <sup>st</sup>	1972 - April 23 <sup>rd</sup>	1989 - April 10 <sup>th</sup>	2006 - April 7 <sup>th</sup>
1956 - April 17 <sup>th</sup>	1973 - March 30 <sup>th</sup>	1990 - April 1 <sup>st</sup>	2007 - April 14 <sup>th</sup>
1957 - April 18 <sup>th</sup>	1974 - April 18 <sup>th</sup>	1991 - April 1 <sup>st</sup>	2008 - April 18 <sup>th</sup>
1958 - April 6 <sup>th</sup>	1975 - April 25 <sup>th</sup>	1992 - April 4 <sup>th</sup>	2009 - April 16 <sup>th</sup>
1959 - April 5 <sup>th</sup>	1976 - April 3 <sup>rd</sup>	1993 - April 18 <sup>th</sup>	2010 - April 1 <sup>st</sup>
1960 - April 14 <sup>th</sup>	1977 - April 9 <sup>th</sup>	1994 - April 14 <sup>th</sup>	2011 - April 14 <sup>th</sup>
1961 - March 28 <sup>th</sup>	1978 - April 16 <sup>th</sup>	1995 - April 14 <sup>th</sup>	2012 - March 19 <sup>th</sup>
1962 - April 22 <sup>th</sup>	1979 - April 23 <sup>rd</sup>	1996 - April 26 <sup>th</sup>	2013 - May 2 <sup>nd</sup>
1963 - April 1 <sup>st</sup>	1980 - April 17 <sup>th</sup>	1997 - April 21 <sup>th</sup>	2014 - April 26 <sup>th</sup>
1964 - April 17 <sup>th</sup>	1981 - March 25 <sup>th</sup>	1998 - April 5 <sup>th</sup>	2015 - April 5 <sup>th</sup>
1965 - April 29 <sup>th</sup>	1982 - April 12 <sup>th</sup>	1999 - April 1 <sup>st</sup>	2016 - March 17 <sup>th</sup>
1966 - March 30 <sup>th</sup>	1983 - April 6 <sup>th</sup>	2000 - March 15 <sup>th</sup>	
1967 - April 7 <sup>th</sup>	1984 - April 14 <sup>th</sup>	2001 - April 20 <sup>th</sup>	
1968 - March 29 <sup>th</sup>	1985 - April 10 <sup>th</sup>	2002 - April 17 <sup>th</sup>	
1969 - April 17 <sup>th</sup>	1986 - April 10 <sup>th</sup>	2003 - April 11 <sup>th</sup>	
1970 - April 18 <sup>th</sup>	1987 - April 9 <sup>th</sup>	2004 - April 3 <sup>rd</sup>	



# Watercraft Inspection Report

By Tom Hauer

The Lake Washington Improvement Association (LWIA) in Meeker County is taking a big step in preventing the infestation of aquatic invasive species. LWIA is budgeting more than \$20,000 in 2016 to control Eurasian water milfoil, Zebra Mussels, Spiny Water flea and other aquatic invasive species.



The LWIA is having a I-LIDS video system installed at Ellsworth Landing that will monitor boat landing activities, capture video events, and make this information available for review by lake constituents and officials. The goal is to improve or maintain the water quality in Lake Washington.

Last year Lake Stella, which flows into the west side of Lake Washington, was infested with Zebra Mussels and lake homeowners are concerned it may spread. How the Zebra Mussels entered Lake Stella is unknown but there is a concern if the invasive species increase it will affect property values, lake quality and usability.

## Background on the impact to lakes so far

The attack against our lake legacy is well underway. We may not realize it but Aquatic Invasive Species are spreading exponentially to our lakes, and they are causing irrevocable impact. Already most of the lakes in the Twin Cities area are infested with Eurasian water milfoil which can grow in up to 35 feet of water and form dense mats at the surface. Zebra mussels are now hitchhiking on vegetation hanging on boat trailers and moving from lake to lake. Spiny water flea and Zebra mussels voraciously filtering the bottom of the food chain are causing dramatic changes to our game fish population.

## Imagine...

- Swimming through thick mats of Eurasian water milfoil on the lake surface
- Algae blooms from Curly leaf pondweed die-off in the summer
- Cutting feet on razor sharp Zebra mussels that blanket the beach
- A closed walleye season because the fishery has been devastated
- Property value loss and trying to sell a home on an infested lake
- Lake residents and LUG's having significant, ongoing management expenses
- Potential well contamination from exposure from 2,4-D herbicide treatments. For a growing number of lake residents and counties in Minnesota, they don't have to imagine, this is the reality.

The Environmental Sentry Protection, LLC out of Maple Grove has a system called I-LIDS. It is a tamper-proof, onsite solution to capture boater activities to ensure compliance with the Aquatic Invasive Species clean-off laws so lakes can be protected from the extensive impact of new exotic species.

# Watercraft Inspection Report (continued)

By Tom Hauer



As a boater enters Ellsworth Landing they will see signage indicating that the area is monitored and instructing them to how they should inspect and clean off their boat and trailer before they launch their boat.

At the same time the I-LIDS system utilizes advanced sensors that tell it when a boater has entered the launch area and turns on video monitoring of the bottom of the boat to identify whether there are aquatics invasive species on the trailer or boat. It also captures clean-off activity by the user.

The I-LIDS system features include: continuous (7 x 24) video capture of launches, vehicle identification, analysis of visitor clean-off compliance and remote management and diagnostics. The unit is solar powered and costs about \$10,000. According to Ken Klehr, president of the LWIA, a grant of \$4,600 has been approved by the Meeker County AIS committee towards the I-LIDS.

For more information LWIA has a website at [www.lakewashingtonassn.com](http://www.lakewashingtonassn.com).

Lake Washington is located on the east side of Meeker County near Darwin and Dassel, Minnesota. It is the largest lake in Meeker County with total acreage of 2,433.85.

LWIA board members include Ken & Cathy Klehr, Rick Fernstrom, Mike & Sandy Wosmek, Pat Hanson, Ron Bubany, Skip Sustacek, Steve Grotbo, Rick Fernstrom, Steve Ullom, David Rathe, Lyle Walker, Rick Johnson and Tom Hauer.

**Midwest  
Garden Company**

Annuals, Perennials, Trees,  
Shrubs, Wild Bird Supplies,  
Garden Accents, Gifts,  
Seasonal Items

21392 CSAH 18  
Dassel, MN 55325

[www.midwestgardenco.com](http://www.midwestgardenco.com) 320-275-9514 Hours: Tues.-Sat. 9-6, Sun. 1-5

The advertisement features a light green background with a stylized green vine graphic on the left. On the right, there is a photograph of a rustic log cabin with a porch. The text is arranged in a clear, readable layout, with the company name in a large, dark font at the top.

# Watershed Committee Report

*By Skip Sustacek*

The ice is off the lake and spring is on its way. People are putting their docks and boat lifts into the lake. It's a great time of the year to see our lake come alive.

Our neighboring lakes Manuella and Stella are starting watershed programs this summer. This will help improve the quality of water traveling into Lake Washington.

The committee is working around the lake, checking all possible watershed problems. The owners of land are involved and may possibly share costs if it is needed. So far the cooperation has been great. Both land owners and the lake benefit from improvements.

Testing of water quality will be done to areas we try to improve. The water samples will be submitted to a professional testing firm and records kept to continually monitor the quality of the water.

Three years ago we started improvement on the southwest corner of the lake. Now we are moving to the east past Ellsworth Landing and on to check behind the campground. Then we will move on to the north to check on the north side of the lake.

The Carlson farm is planning work to property on the south side. The areas to the east and north are also in process.

If any of you notice an area of watershed problems, please call 320.241.8454.

The holding pond on the southwest side of the lake is doing very well and the area has a good look about it.

Thank you all for your support on this ongoing project. It will make a difference to our lake.

# Cormorant/Pelican Impact Committee

*By Rick Fernstrom*

The committee has started 2016 efforts by planning to meet with the new Hutchinson DNR staff and discuss the area lake impact of cormorants and pelicans. Since the beginning of 2011, our efforts have contributed hundreds of volunteer hours across numerous area lake associations trying to understand the impact of the Pigeon Lake rookery on our area lakes. To date, the Hutchinson DNR has been unwilling to agree on the need to control cormorant populations despite data linking the drop in DNR fish survey populations and rising cormorant nesting populations. Moreover, the Hutchinson DNR has maintained a "do nothing" approach despite fellow DNR administrations in Minnesota taking action to control cormorant populations under far less aggressive situations. Lake of the Woods, Leech Lake, and Lake Vermilion all have active cormorant control programs in place supported by their representative DNR resources. Pigeon Lake has the largest single cormorant population in Minnesota and far less open water compared to these massive lakes. So why the "do nothing" approach on Pigeon Lake? This is the question we continue to ask and seek DNR support to implement the right control measures.

**Recent Activity:** At the beginning of April, a representative from Lake Jennie commented "The cormorants and pelicans are back. They were on a feeding frenzy on Jennie." A Collinwood representative commented "Collinwood had no cormorants and we can thank the two bald eagles circling the lake. They are a main predator of the cormorant."

# Grants 2016

By Ken Klehr

As in past years, over the winter we are busy pursuing grant dollars to help support our efforts for projects to protect and preserve Lake Washington for our and future generations use. Below is a list of grants and associated projects we have been working on. Over the years these grants and funding have been offered by Meeker County, State of Minnesota, Meeker County Soil and Water Conservation District, and Crow River Organization of Waters, In addition local Townships, such as Ellsworth, supported the updating of the holding pond in the southwest of Lake Washington. We are very thankful for their support over the years. If you have the opportunity please say thank you and let them know we need their continued support.

Make sure you read the article Tom Hauer wrote covering the I-LIDS project. This is a video monitoring of boat/trailer launches at Ellsworth landing to prevent Aquatic Invasive Species (AIS). This device will include an audio education. The I-LIDS will be installed by Environmental Sentry Protection, with our own Dave Rathe heading up the project. We are excited about this I-LIDS system and expect it to be operational by fishing opener.

Organization	Dollars	Description	Status
Meeker County Association of Lakes (MCAL) and Meeker Soil and Water Conservation District	2500	Watershed	Approved
Meeker County AIS Committee	4600	I-LIDS	Approved
Meeker County AIS Committee	5400	Chem. Treatment Milfoil	Approved
Meeker County	300	Water Quality Test	Approved
State of Minnesota	4999	Chem. Treatment Milfoil	Pending
Total			
	\$17,799		

**Mark Your Calendar!**

**The new Darwin Tavern will be opening May 1**

- Breakfast
- Lunch
- Supper

**BEER  
WINE  
SETUPS  
PULL TABS**

**324 N. 1<sup>st</sup> St in Darwin**

**Dassel Rod & Gun Club**



**Spring Fish Fry!**

**April 22<sup>nd</sup>**

Fish served from 11:00am to 7pm

Fried Alaskan Pollock  
Au Gratin Potatoes, Cole Slaw, Baked Beans, Bread, Milk, and Coffee  
Pop and Setups Available

**at Sportsman's Park on Lake Washington**

Adults - \$10.00  
Children under 12 - \$5.00



# COMMITTEE REPORTS

## Shoreline Captains/Membership Committee

*Cathy Klehr, Ron Bubany, Rick Johnson, Mike & Sandy Wosmek*

Your membership to Lake Washington Improvement Association is needed and appreciated to continually maintain the quality and beauty of our lake. It would be great if everyone helped by joining the Association. Please take time to fill out the enclosed Membership Registration card and return in the envelope provided. Thank You for your support.

Thanks to the Shoreline Captains for keeping our neighbors informed about important lake issues. For a complete listing of all Shoreline Captains and their area, visit us on our Web site. If you are interested in volunteering your time, please contact any board member. You can also attend our annual SLC Kickoff meeting on Saturday, May 21<sup>st</sup> 9:30 at my house, 69693 -233 St .

For changes of address, phone, e-mail or any other information, please contact us at [membership@lakewashingtonassn.com](mailto:membership@lakewashingtonassn.com)

AS A FULL SERVICE TREE  
CONTRACTOR LOCATED IN DASSEL  
WE ARE PROUD TO SERVE THE LAKE  
WASHINGTON COMMUNITY.  
CONTACT US TODAY FOR A FREE  
ESTIMATE.

TREE REMOVAL  
TREE TRIMMING  
LOT CLEARING  
STORM CLEANUP  
STUMP GRINDING  
HIGH RISK CLIMBING  
BUCKET TRUCK WORK

**KIVISTO WEST**  
TREE SERVICE

320.221.5113

[www.kivistowest.com](http://www.kivistowest.com)

DASSEL, MN

## Committee Reports (continued)

### FINANCE / FUND RAISING COMMITTEE

*Lyle Walker*

Financial activity has been minimal over the winter months. There are no unpaid or outstanding bills at the end of March. We are approaching the end of our fiscal year at April 30. Our financial position remains strong as we anticipate the beginning of the 2016 summer season. Total Association funds at March 31 are \$106,693.

### SOCIAL COMMITTEE

*Skip Sustacek, Mike & Sandy Wosmek*

Hope to see many of you at the annual meeting. B & B Sports in Hutchinson is once again paying for the pork chops for us. PLEASE thank them when doing business with them.



**ANNUAL MEETING—SATURDAY, MAY 7, 2016**  
**DASSELROD & GUN CLUB—PORK CHOP DINNER**

**Meat Raffle**

**6:30 Program:**  
Committee Reports  
Speaker  
Board Elections  
Open Discussion

**Meat Raffle**

**Social Hour - 5 PM (please bring your own refreshments) Dinner - 6 PM Program - 6:30 PM**  
**FREE pork chop, bean casserole, cole slaw, potato chips, bread, brownies, coffee/koolaid**  
**Please thank B&B Sports for buying the pork chops when you are doing business with them!**

# **DARWIN MUNICIPAL LIQUOR STORE**



LOCATED ON HWY 12 NEXT TO SCHMIDTY'S GAS STATION IN DARWIN

OPEN: MON-THUR 9am-9pm  
FRI-SAT 9am-10pm



**APRIL BEER of the MONTH**

**BUSCH & BUSCH LIGHT**

**24pk 12oz CANS**

**\$14.99**

**THERE'S A BOGO FREE SALE HAPPENING!!**

**ROTATING ITEMS FREQUENTLY**

**DON'T FORGET TO STOP IN AND**

**CHECK IT OUT!!**

**(320) 693-2586**

**darwinliquor@gmail.com**