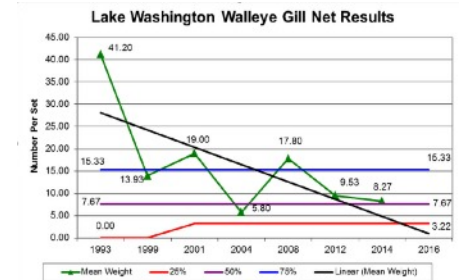




# FALL 2014

## Watershed Work Nears Completion!

*A new mini wetland to filter runoff waters entering Lake Washington.*



**Walleye numbers have dropped — AGAIN.**



**A rare find.**



**First in a series of articles on the recent Property Owners Survey.**



**Pigeon Lake water samples.**



Lake Washington Improvement Association

*LWIA is protecting your investment.  
Become an LWIA Member*

*Invasive Species Control*

*Cormorant/Pelican Lobby*

*Watershed Cleanup*

*Watercraft Inspection*

*Communications*

*Grant Procurement*

*Social Events*

*If you are not a member, you need to be!  
Look for your membership application next  
spring.*

*For further information write to our membership office:  
[membership@lakewashingtonassn.com](mailto:membership@lakewashingtonassn.com)*

# FALL NEWSLETTER, 2014

---

Lake Washington Improvement Assn.  
PO Box 68 Dassel, MN 55325  
[www.lakewashingtonassn.com](http://www.lakewashingtonassn.com)  
Email: [info@lakewashingtonassn.com](mailto:info@lakewashingtonassn.com)

---

## Contact Us

General Issues:  
[info@lakewashingtonassn.com](mailto:info@lakewashingtonassn.com)

Cormorant Issues  
[cormorants@lakewashingtonassn.com](mailto:cormorants@lakewashingtonassn.com)

Watercraft Inspection Program  
[inspections@lakewashingtonassn.com](mailto:inspections@lakewashingtonassn.com)

Membership Changes  
[membership@lakewashingtonassn.com](mailto:membership@lakewashingtonassn.com)

Lake Alerts  
[alerts@lakewashingtonassn.com](mailto:alerts@lakewashingtonassn.com)

Invasive Species Program  
[Invasive@lakewashingtonassn.com](mailto:Invasive@lakewashingtonassn.com)

Watershed Project  
[watershed@lakewashingtonassn.com](mailto:watershed@lakewashingtonassn.com)

Lost and found  
[lostfound@lakewashingtonassn.com](mailto:lostfound@lakewashingtonassn.com)

The Lake Washington Newsletter is published three times a year (Spring, Summer and Fall) by the Lake Washington Improvement Association. It is distributed free to lake property owners and friends around Lake Washington.



**Cover:** Our first major watershed project is under way and nearly finished.



- 6** Walleye numbers plummet once again after fourth DNR Survey. See the Cormorant Committee report.
- 10** Rare spotted salamander captured.
- 11**  Some basic findings from the recent Property Owners Survey.
- 12**  This stuff is flowing toward Lake Collinwood?
- 13** Committee Reports.
- 16** Political Adverts

## End of the Dock

It is that time of the year. I am sitting here at my desk and looking out at the lake trying to figure out where the summer has gone. Thinking a couple of weeks ago it was 84 degrees, as I look at the outdoor thermometer it says 34 degrees. What a change! So I need to get the play toys, including the dock, out of the water and winterized. I am sure you will be doing the same thing.

Remember to **STOP AQUATIC HITCHHIKERS** by **CLEANING** all visible aquatic plants from watercraft, trailers, and water-related equipment before leaving any water access or shoreline. **DRAIN** water-related equipment ( boat, portable bait containers, motor) and drain bilge, live well and bait well by removing drain plugs before leaving a water access or shoreline property. Keep drain plugs out and water-draining devices open while transporting watercraft. **DISPOSE** of unwanted bait, including minnows, leeches, and worms, in the trash. It is illegal to release live bait into a water body or release aquatic animals from one water body to another. If you want to keep your live bait, you must refill the bait container with bottled or tap water. I know this gets to be a pain but following these steps will help protect our lakes and waterways against Aquatic Invasive Species.



Ron Bubany and I had the pleasure this summer in working with Pam Anderson, Water Quality Specialist, Minnesota Pollution Control Agency (MPCA). This effort involved gathering water samples at the inlet, outlet and downstream of Pigeon Lake. Then have the water samples tested and analyzed to determine what impact the cormorant and pelican's rookery has on water quality. These samples were given to a test lab and then we had the test results analyzed by Pam Anderson, MPCA. She issued a report indicating some test parameters were high but not to the point of being impaired.

With these test results it looks like we won't be sending an eviction notice to the cormorants or pelicans nesting on Pigeon Lake in the near future. Would like to thank Pam for her timely support of this project and also Collinwood Lake Community Association, George Kraemer, who helped financially support this effort along with Meeker County. Also see article "A Qualitative Analysis of Pigeon Lake Water Flow" which points out the benefit of wetlands.

***I have been on the Lake Washington Improvement Association's Board of Director's going on 7 years, of those 6 as President. I have enjoyed my time on the Board and found it to be very interesting and challenging. Due to health issues I will be stepping down as president but will continue as an active board member. If you are interested in a rewarding position, please contact me or any board member for more information.***

In closing I would like to thank all the members for their support thru membership dues and donations. If you are not a member please join. Hope to see you ice fishing. That sounds cold!!!

The presentation that Lee Sundmark, DNR gave at the August potluck is on our website. You can view it at <http://www.lakewashingtonassn.com/pdfs/DNRAug2014.pdf>.

*Ken Klehr, President*

# The Watershed Committee Attacks Runoff Pollution

Ken Klehr, Skip Sustacek, Rick Fernstrom, Rick Johnson



Work on our project is proceeding very well considering our wet weather. Leveling of the extra soil and seeding is left to do. Linberg Excavating Inc of Cokato has done a great job. If you can, stop by and see the project ½ mile east of County 14 on 215<sup>th</sup> St (north side).

Thank you to Ellsworth Township Board for the \$500 donation for our project.

Next spring, Dockside Magazine will have an article about our watershed improvement. Editor Juliana Thill is very happy that we contacted her about our project.

Thank you to all from Ken Klehr, Rick Johnson, Rick Fernstrom and Skip Sustacek water shed committee for all your support.

People – if you feel you have a watershed problem in your area, please contact one of the committee members.

# Cormorants and Pelicans. Here we go again...

Rick Fernstrom, Ken Klehr, Dean Shaner, George Kraemer, Ray Haugland, Arlan Lovald, Milt Lueneburg, Ron Bubany

At the August 2<sup>nd</sup> Lake Washington Improvement Association potluck, Lee Sundmark, Supervisor DNR Division of Fish and Wildlife, Section of Fisheries Hutchinson Fisheries Management Area, was our guest speaker to cover the cormorant & pelican impact on area lakes. Lee handed out information and Washington fish surveys supporting adversely impacting fish population.

“fourth consecutive survey drop”

covered the various areas of Lake the argument that cormorants are not As expected, we heard that the DNR cannot conclude that fish stocks have been depleted by cormorants beyond the normal range of historical and lake class catch rate variability. We also heard that walleye survey abundance must be below the 25 percentile for two or more surveys before the DNR considers recommending a reduction in cormorants.



Shortly after the Potluck, the 2014 Lake Washington fish survey data became available. The overall trend of fish 0 - 14 inches (cormorant feeding range) continues to drop (fourth consecutive fish survey drop) yet walleye data does not support a depredation order from the DNR.

Below is a summary of the 2014 Lake Washington fish survey and the trend showing the continued drop in fish per net set.



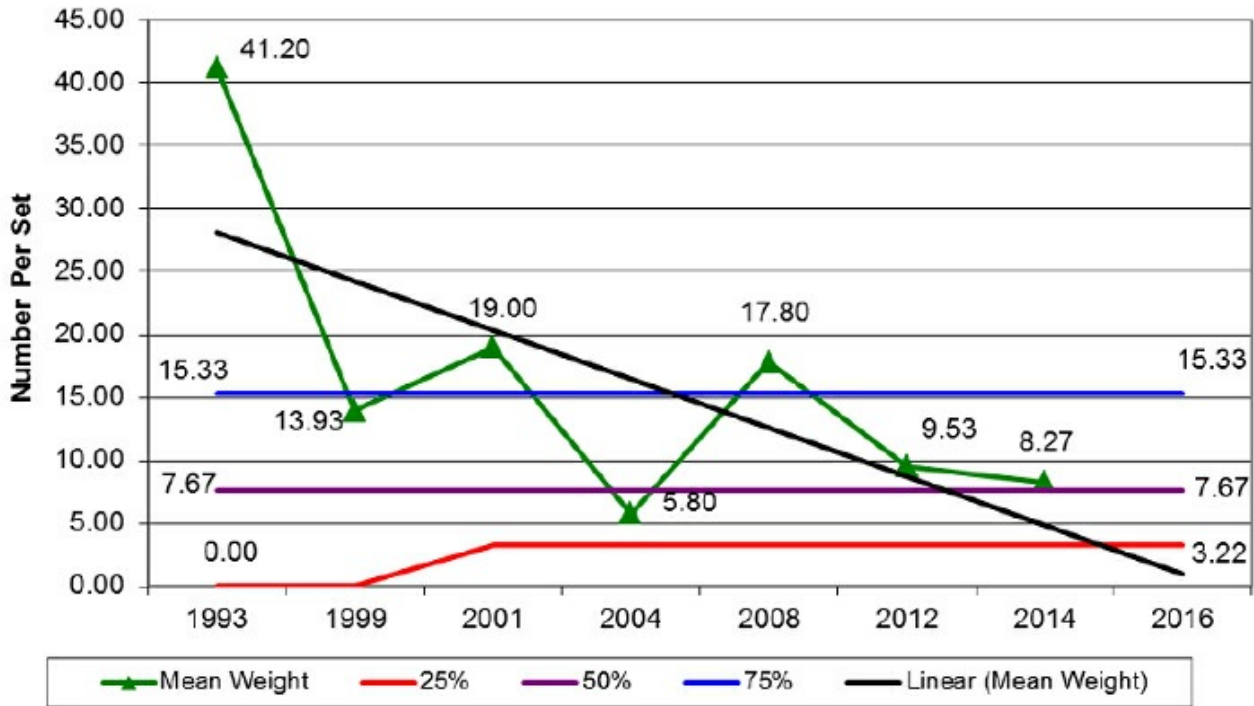
## Lake Washington 2014 Fish Survey Trend

### Summary Notes

- Gill net results for fish 0 – 14 inches dropped for the fourth consecutive survey since 2001
- Trap net results for fish 0 – 14 inches dropped 48.8% from the last survey in 2012
- Combined gill and trap net results for fish 0 – 14 inches dropped for the fourth consecutive survey since 2001
- Lake Washington has not had two consecutive walleye gill net catch rates as low as 2012 & 2014 since 1951 & 1957
- Overall fish count trends show a continued drop in fish within the range consumed by cormorants and pelicans
- DNR will not be counting birds this year so no comparison of fish per nests is available
- DNR walleye survey data shows Lake Washington above the 50% quartile for lake class 41 in both number per set and mean weight denoting a healthy walleye population

# Cormorants (continued)

## Lake Washington Walleye Gill Net Results

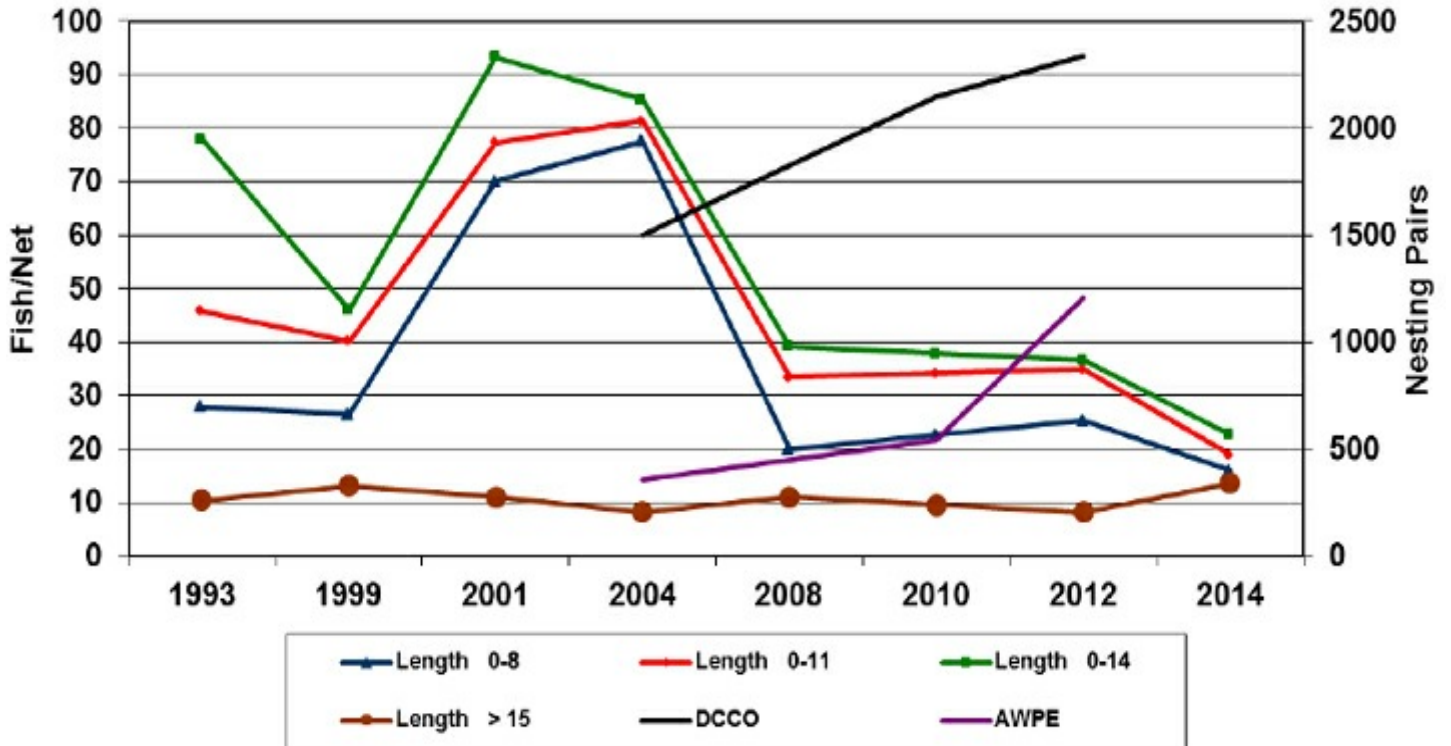


## Gill & Trap Net Assessment

Year	Length 0-8 Inches			Length 0-11 Inches			Length 0-14 Inches			Length > 15 Inches			DCCO	AWPE
	Qty	Length 0-8	% Change	Qty	Length 0-11	% Change	Qty	Length 0-14	% Change	Qty	Length > 15	% Change	Nesting Pairs	Nesting Pairs
1993	239	27.8		371	45.8		607	78.0		90	10.3			
1999	397	26.5	-4.9%	602	40.1	-12.4%	691	46.1	-40.9%	196	13.1	26.9%		
2001	1050	70.0	164.5%	1160	77.3	92.7%	1400	93.3	102.6%	165	11.0	-15.8%		
2004	1164	77.6	10.9%	1221	81.4	5.3%	1279	85.3	-8.6%	122	8.1	-26.1%	1503	357
2008	298	19.9	-74.4%	500	33.3	-59.0%	587	39.1	-54.1%	163	10.9	34.4%		
2010			↓			↓			↓			↓	2145	543
2012	379	25.3	27.2%	522	34.8	4.4%	548	36.5	-6.6%	122	8.1	-25.6%	2334	1205
2014	238	15.9	-29.7%	283	18.9	-44.6%	339	22.6	-40.3%	203	13.5	42.0%		
2004	→		-74.4%			-59.0%			-54.1%			33.6%		
2004	→												39%	156%
2004	→		-79.6%			-76.8%			-73.5%			66.4%		

# Cormorants (continued)

## Lake Washington - Total Fish/Net



# **DARWIN MUNICIPAL LIQUOR STORE**

LOCATED ON HWY 12 NEXT TO OUTPOST GAS STATION IN DARWIN

OPEN: MON-THUR 9am-9pm  
FRI-SAT 9am-10pm



**NOVEMBER 13TH**  
**AT WAHOO'S**  
**BAR & GRILL**  
**DARWIN**

**CHECK STORE FOR**  
**MORE DETAILS!!**



**Beer & Wine Tasting**

**HOLIDAY HOURS:**  
 THANKSGIVING EVE: 9AM-9PM  
 THANKSGIVING: CLOSED  
 CHRISTMAS EVE: 9AM-8PM  
 CHRISTMAS: CLOSED  
 NEW YEARS EVE: 9AM-6PM  
 NEW YEARS DAY: CLOSED

**(320) 693-2586**
**katieriehle@hotmail.com**



## Cormorants (continued)

On a related topic, the DNR released the note below regarding another outbreak of Newcastle disease on Pigeon Lake. Every two years, this disease surfaces and not only kills the very birds we wish to reduce but also infects other species that are at a minimal population. More importantly, Newcastle disease is a threat to local poultry farmers and can have a devastating impact on commercial bird populations. So what is more important to the DNR? Risk the fish population of area lakes and endanger local poultry farmers or protect the birds that drive the risk?

**DNR NEWS – FOR IMMEDIATE RELEASE - September 18, 2014**

### ***Islands in Pigeon Lake in Meeker County closed due to bird virus***

***Islands in Pigeon Lake in Meeker County have been closed to public access following the discovery of virulent Newcastle Disease Virus (vNDV) in double-crested cormorants.***

---

***Islands in Pigeon Lake in Meeker County have been closed to public access following the discovery of virulent Newcastle Disease Virus (vNDV) in double-crested cormorants.***

---

***The Minnesota Department of Natural Resources made the decision when about 30 cormorants and several pelicans were recently found dead at nesting colonies on those islands. The National Wildlife Health Center in Madison, Wisconsin, confirmed the virus late last week. The islands will be closed until further notice. The closure is intended to reduce potential disease spread among domestic and wild bird species.***

***Newcastle Disease rarely affects humans but when it does it generally causes conjunctivitis, which is a relatively mild inflammation of the inner eyelids. It is spread to humans by close contact with sick birds. Wild birds can be a potential source of the disease if they come into contact with domestic poultry. Owners of domestic poultry (including small flocks) should not come in contact with birds believed to have vNDV.***



***Area farmers should practice sound bio security procedures, including monitoring their poultry flock for signs of illness and taking steps to prevent wild birds from having contact with their domestic birds. If domestic birds show sign of sickness, producers should contact their veterinarian or the Minnesota Board of Animal Health at [320-231-5170](tel:320-231-5170).***

***Newcastle Disease is a viral disease that most commonly infects cormorants, but can also affect gulls and pelicans. Clinical signs of infection in wild birds are often neuralgic and include droopy head or twisted neck, lack of coordination, inability to fly or dive and complete or partial paralysis. Juveniles are most commonly affected.***

***This is not the first time vNDV has occurred on Pigeon Lake. The last outbreaks were in 2010 and 2012 and also involved multiple sites throughout the state. Public access to islands with nesting colonies was closed during those events as well.***

## Rare Spotted Salamander found!



In Minnesota, Spotted Salamanders (*Ambystoma maculatum*) weren't documented until the spring of 2001 during surveys conducted by the Minnesota Biological Survey. The Spotted Salamander is a forest species more common in the eastern United States.

This elusive species was documented in Minnesota on April 26, 2001 when seven Spotted Salamander egg masses were located in a shallow wetland within the Nemadji State Forest.

Our own Tom Hauer discovered this beautiful specimen in his very own driveway last month. It measured about 9 inches long.

Tom submitted a report of the finding to the Minnesota DNR.

## A Tainted Sunrise

*Ron Bubany - Layout Editor*



The sun is rising. The lake view is one of matted, clogging weeds and algae across the surface. There are no boats nor fishermen, because the popular walleye population has been decimated. Pipe inlets and outlets are clogged with mussels. There is a faint clinging odor arising from the water.

Prospective property buyers such as nature lovers, boaters and fishermen are looking for properties elsewhere. As a result local property values are headed south.

Can't happen here?

Well, review information at the DNR. Read and watch the scientific magazines and TV broadcasts. Recall the clogging masses of milfoil that occurred in Lake Washington just a few years ago.

The only thing preventing such disasters is the Lake Washington Improvement Association (LWIA). LWIA is addressing all of these issues to keep them from happening, or at least reducing their impacts on our property values.

If you are not a member, you need to be. Please set aside a few quarters each week and join us when the membership applications are delivered next spring. The dues are tax deductible and, by helping to keep property values up, represent a much stronger investment than, say, a bank savings account.

# Property Owner's Survey

Steve Ullom



*This is the first in a series of articles we will use to summarize the information shared with the Board on the survey.* The complete survey, a summary analysis, action plans, and all the written comments are now available on our website.

This forum will be used to provide feedback on specific information for property owners, with the expressed purpose of increasing knowledge and understanding of how their actions impact the lake community. Survey results showed 69% of the surveys were returned, thanks primarily to the great effort of the Shoreline Captains and hard work by Cathy Klehr. The data shows 53% of the people live on the lake year round and 35% of the property owners have assumed ownership in the past 20 years. With this trend, property owner's actions and management practices become a more significant part of the management of all the lake resources that include water quality, fish, wild life, and surrounding areas that directly impact the water quality on a year round basis. On average 10 adults and 8 children spent time at the lake for each survey respondent. Data reported showed an average of 1.5 watercraft per property. People have found many water activities for Lake Washington: 75% of the respondent's fish, with swimming and boating completing the top three. When asked about water quality, 75% said the water quality has about the same for the past 5 years. The ranked order of issues and problems showed the following: Eurasian Water Milfoil, cormorants, line erosion, and boating traffic in order of significance. 90% were aware of Lake Washington's yearly milfoil treatment plan included treating 70 acres per year on a rotating basis. Respondents rank ordered 'what most affects water quality on the lake': Runoff 46% and milfoil 38% were two areas of statistical significance the Association needs to address. The data shows 94% of the people regularly receive the Newsletter and it provides valuable information about what happening on the lake, updates on laws and rule changes, and provides useful information.

**This forum will provide feedback on specific information for property owners.**

Some Action Points the Board will be addressing in future Newsletters will focus on: water quality (what do we do that most affects it), the impact of runoff, septic systems maintenance, increasing Association membership, invasive species, fishing concerns, water safety, and providing better more up to date information on the annual water testing results, actions of various committees, and sharing information we have on our website.

As property owners we can become more educated by referencing information we have published in our Lake Washington Directory on Lake History, Your Shoreline Septic System, Shoreline Erosion, Lawns and Gardens, Hazardous Household Products, and Minimizing Runoff. The directory is published on our website.

# A Qualitative Analysis of Pigeon Lake Water Flow

Ron Bubany and Ken Klehr

While collecting water samples for quantitative analysis (see our Water Quality article) Ken and I also collected three samples for subjective analysis. The samples are shown below.

S001 is the water collected from the inlet to Pigeon Lake. The water is sparkling clear as it might appear in a mountain stream.

S002 is the water collected from the outlet of Pigeon Lake. This water is tainted yellow-green and has a putrid smell. This could be from algae, farm runoff, or perhaps from the large Cormorant/Pelican colonies on the lake. Maybe all three.

S003 is the water from Pigeon Lake after it has passed through a large wetland area and is moving into Lake Collinwood. This water is once again sparkling clear, demonstrating in vivid detail the value of our wetlands. If not for these lands, Lake Collinwood would surely be severely impacted.



## Invasive Species

Ron Bubany, Tom Hauer, Ken Klehr, Milt Lueneburg, Bill Ooley, Pat Hanson, Mary Braaten

This summer we conducted three extensive surveys, looking for Eurasian Water Milfoil. None of these surveys produced any evidence of the plant. As a result, no treatments were ordered or performed this year.

Strangely, lakes Manuella and Stella continue to have milfoil. Lake Stella was, in fact, treated this summer. Bizarre.

We will continue our surveys in 2015, as most likely the milfoil will recur. Also, we will be having an eye out for zebra mussels which seem to be coming in our direction. Lakes near us include Green and Calhoun (Kandoyhi County), Fish Lake (Wright County) and Watab Lake (Stearns County).

# Committee Reports

## **FINANCE / FUND RAISING COMMITTEE**

Lyle Walker

As the summer season comes to a close, the financial position of the Lake Association at September 30, 2014 remains strong. Memberships for 2014 number 217 and generated \$10,850 for the Association. Members donated \$5,225 to the Invasive Species fund and we benefitted from the fact that we did not have to spend any funds for milfoil treatment this season. Support for the Dassel Fire Department was strong again, with 77 members donating \$1,775 through the Association. With no unpaid bills on hand at September 30, total funds are \$108,789.

## **SOCIAL COMMITTEE**

Skip Sustacek, Mike & Sandy Wosmek, Mary Braaten

The annual All-Lake Pot Luck Dinner was held on Saturday, August 2nd. Sloppy Joes and beverages were provided, and everyone enjoyed the variety of potluck dishes that were brought to share.

There were some amazing door prizes, and best of all, there were more door prizes than there were people. So, some of us went away with 2 door prizes. Lee Sundmark, from DNR Fisheries Department, presented information about pelicans, cormorants, and the history of the area's fish populations. The graphs that accompanied his presentation are available on the Lake Washington Improvement Association website, <http://www.lakewashingtonassn.com>.

We would like to thank all the businesses that generously gave those door prizes, which are listed in the Communications Committee Report. We want to remind members to patronize these businesses that donated, and also those businesses that advertise in our newsletter. When you are in their business, please mention where you saw their donation or ad, to help encourage them to support the Lake Washington Improvement Association.

Our 2015 social events are:

First Saturday in May, May 2, 2015: Free Pork Chop Dinner, and Annual Meeting

First Saturday in August, August 1, 2015: All-Lake Pot Luck Dinner

Both will be held at the Dassel Rod & Gun Club

## **COOKBOOKS**

Cathy Klehr, Sandy Wosmek

Lake Washington cookbooks are available for \$10.00. To purchase a cookbook call Cathy @ 320-626-2056, Sandy @ 320-275-4662 or go to [info@lakewashingtonassn.com](mailto:info@lakewashingtonassn.com) and we can get a copy to you.

## Committee Reports (continued)

### SHORELINE CAPTAINS/MEMBERSHIP COMMITTEE

Cathy Klehr, Rick Johnson, Mike & Sandy Wosmek

Currently we have 217 paid members and many of you made additional contributions to the milfoil fund and the Dassel Fire Dept. Your continued support is appreciated and needed in our effort to keep our Lake Washington clean and healthy for **ALL** to enjoy throughout the year. If you have not paid dues for this year, you can still do so by mailing in a check for \$50 to LWIA, Box 68, Dassel, MN. 55325. We all need to work together in supporting our lake needs.

Special Thanks to the Shoreline Captains for all the time and effort they put into reaching out to lake residents:

Sheryl Faust	Jenna O'Brien	Bob Paulson	Phil Flores	Christine Ullom
Liz Milne	Jenny Kjell	Grace Brinkmann	Mike, Sandy Wosmek	Sharon Daniels
Ray Haugland	John Sandstede	Jim Wendling	Jim Barnes	Steve Knapp
Cathy Klehr	Nancy Finkenaur	Mary Jo Lyke	Ruth Fink	John Bartz

For changes of address, phone, e-mail or any other information we should be aware of, please contact us at

[membership@lakewashingtonassn.com](mailto:membership@lakewashingtonassn.com)

**Craft MN  
Brews  
Available Here!**

**NEW!**  
**SUNDAY BRUNCH**  
10AM - 1PM

**Entertainment  
Every Other  
Friday!**

**Happy Hour**  
3PM - 6PM



**OPEN:** W-M Closed Tues.  
**NOW WE DELIVER...**  
Our Menu & Our Newly Added Fresh PIZZA!  
(In The Darwin Area)  
**(320)373-5083**  
324 1<sup>st</sup> Street North, Darwin, MN 55324  
**FACEBOOK PAGE:** <https://www.facebook.com/wahoosmn>

## Committee Reports (continued)

### COMMUNICATIONS AND PUBLIC RELATIONS COMMITTEE

Steve Ullom, Steve Grotbo, Rick Fernstrom, Tom Hauer

The following is a list of local businesses that donated door prizes for give away at our Pot Luck Dinner in August. Please take time to look at the list and remember we can thank them for supporting LWIA by doing business with them through out the year. A Big Thank You to all of them from LWIA of Meeker County.

**Dassel:** Dassel Coop, Ron's Max Fuel, DC Auto Parts, Red Rooster Foods, 3<sup>rd</sup> St Café, Jimmy's Piza, Dassel Bakery, Latte Da Coffee. **Darwin:** Farmers State Bank of Darwin (Dassel); Darwin Monuments, Blue Moose.

**Litchfield:** Country Store, Stockman's, Sears, Econofoods, Runnings. **Hutchinson:** Sears, Landscape Concepts, Northern Links, B & B Sports. **Cokato:** Becky and Dan's, Marketplace, Keavney Drug, Chuck's Florist, Lake Region Insurance

The ads in the newsletter help defray the costs of mailing out the newsletter, if you know of anyone wishing to advertise the price is \$40 1/4 page, \$60 1/2 page, and \$80 full page.

Coupon

Coupon

**10% OFF  
Food Order**

**A BLUE MOOSE**  
  
**Grill & Pub**

**See Our  
Nightly  
Specials**

Coupon

Coupon

311 1<sup>st</sup> N., Darwin, MN  
320-693-9161

Coupon

Good For The Months of November & December 2014

Coupon

**ELECT**  
**JON THOMA**  
**FOR MEEKER COUNTY SHERIFF**

**QUALIFIED LEADER** – I have 25 years of law enforcement experience in both Meeker County and Sacred Heart, Minnesota, serving as:

- Captain for the past five years
- Kandiyohi/Meeker Drug Court Committee
- Mounted Horse Patrol Supervisor
- Reserves Supervisor
- D.A.R.E. Instructor
- Canine Officer
- Deputy Sheriff
- Chief of Police



Paid for by the Committee to Elect Jon Thoma. P.O. Box 151, Litchfield, MN 55355



ELECT

# CRUZE

MEEKER COUNTY

# SHERIFF

- AN ENTIRE 20 YEAR CAREER DEDICATED TO THE PEOPLE OF MEEKER COUNTY
- A FOUR-YEAR DEGREE IN CRIMINAL JUSTICE STUDIES
- A TWO-YEAR DEGREE IN BUSINESS
- PRIVATE SECTOR BUSINESS MANAGEMENT EXPERIENCE
- EXPERIENCE THAT WILL BRING A FRESH PERSPECTIVE AND NEW PROGRAMS TO OFFICE



*Leadership* WITH **INTEGRITY**

[WWW.CRUZEFORSHERRIFF.COM](http://WWW.CRUZEFORSHERRIFF.COM)

Prepared and paid for by the candidate on his own behalf. Brian Cruze, PO Box 183, Litchfield, MN

# CHAD MILLER

FOR

## MEEKER COUNTY ATTORNEY

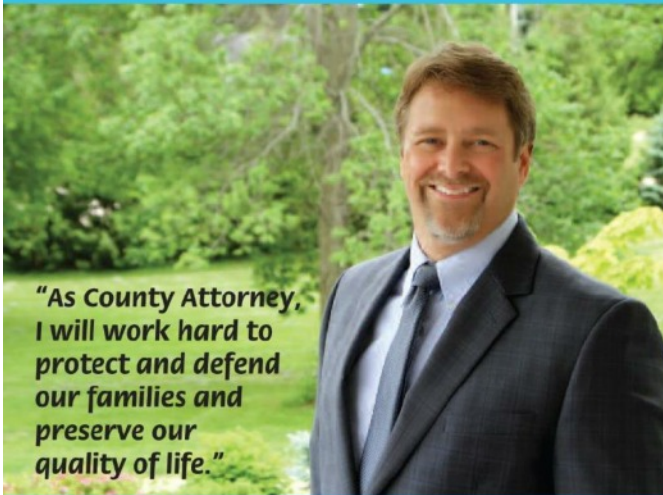
★ CHAD ★

# MILLER

FOR

# MEEKER

★ COUNTY ATTORNEY ★



*"As County Attorney, I will work hard to protect and defend our families and preserve our quality of life."*



### FAMILY

- 4 generations of my family live here in Meeker County
- My wife and I have a young son and are expecting our second baby this fall

*Chad Miller  
for Meeker County Attorney*



### EDUCATION

- Law Degree from William Mitchell College of Law, Graduated 4th in class with Honors
- Master's in Business Administration from Western New England University
- Bachelor's Degree from Hamline University
- Willmar High School, Class of 1986

[millerformeeker.com](http://millerformeeker.com)

*Prepared and paid for by the candidate on his own behalf.  
Chad Miller, PO Box 84, Dassel, MN 55325  
Phone: 612-412-8923*